

DENON CONTROLLERS QUICKSTART GUIDE

- DENON DN-HC4500 • DENON DN-HD2500 •

DENON DN-HD2500

INSTALLATION

MAC

1. Connect your DN-HD2500 to an available USB port.
2. Your DN-HD2500 will be detected automatically and will be ready to use.

WINDOWS

1. Connect your DENON DN-HD2500 to an available USB port.
2. You will see the following prompt from Windows: "Can Windows connect to Windows update to search for software?"
3. Select: "No, not this time" followed by "Install automatically"
4. Windows will then notify you that it has found the device: "Found new Hardware DN-HD2500, followed by USB composite device" bubbles will appear.
5. You will be prompted to install 2 drivers. "USB composite device" and "USB audio device". Follow the prompts as per the usual driver installation method for windows.

SETUP

1. Start Scratch LIVE and switch both decks to internal mode.
2. Turn on the DN-HD2500 and set it to "Midi" mode. To set it to "Midi" mode, press the SOURCE button, and use the PARAMETERS knob to scroll through the options. *make sure you set it to MIDI and not PC.
3. You will now be able to control Scratch LIVE with your DENON DN-HD2500.

BASIC OPERATION

To select and load tracks, use the PARAMETERS knob to scroll through your library and crates.

By pressing the PARAMETERS knob can select a crate, sub-crate, and load your track all without touching your computer. The BACK button returns you to the previous location selected.

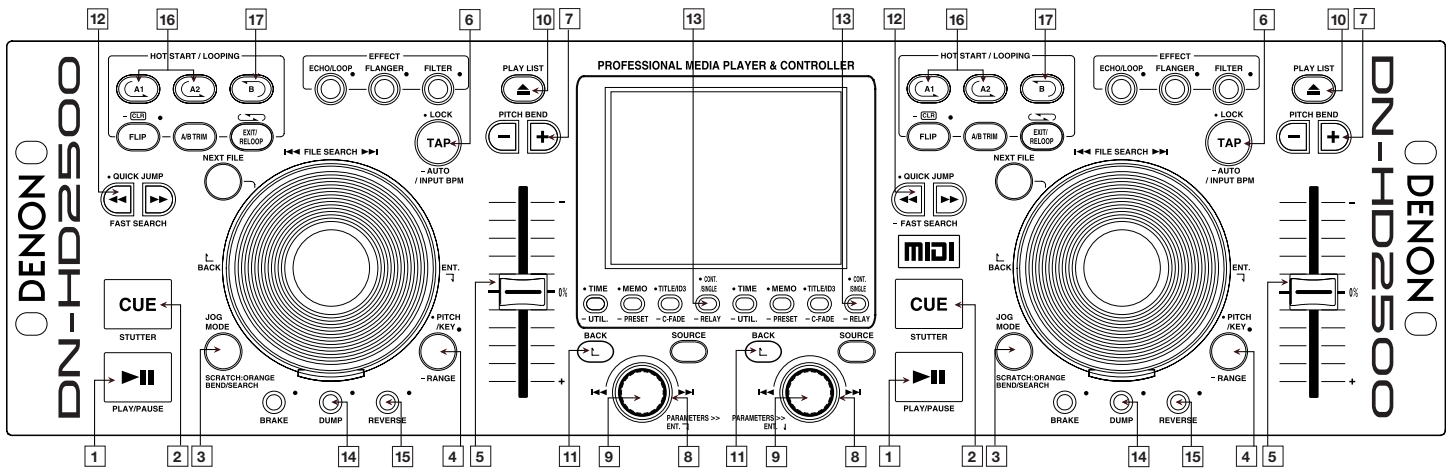
PLAY/ PAUSE plays and stops your track. Control the speed of the braking as normal in the setup menu of Scratch LIVE.

Pitch Bend, fast search, eject, and tap tempo are all mapped directly to Scratch LIVE.

The PITCH / KEY button turns the Key Lock feature on or off in Scratch LIVE.

The DUMP button controls the Censor feature in Scratch LIVE.

You can assign up to 2 Loops using the HOT START / LOOPING buttons on the DN-HD2500. Use the A1/A2 button to start your loop and the B button to set your end point. To exit a loop, press the EXIT/RELOOP key. To return to your loop, use the A1 and A2 keys for loops 1 and 2 respectively.



	DN-HD2500 CONTROLS	SCRATCH LIVE FUNCTIONALITY
1	Play/Pause	Play/Pause.
2	Cue	CD player style cue.
3	Jog mode	Toggles between scratch and bend modes.
4	Range / Key	Keylock. Press and hold for one second to toggle pitch slider range.
5	Pitch Slider	Pitch Slider +/- 8%.
6	Tap	Tap Tempo have to tap at least 4 times, hold button down to cancel save.
7	Pitch bend +/-	Pitch bend +/-.
8	Parameter knob	Scroll crates / browse / track list.
9	Parameter press	Enter crate / browse column / load track.
10	Eject / Playlist	Eject.
11	Back	Up a level of your browsing.
12	Fast search << >>	RW / FF.
13	Cont/single	Toggles auto mode.
14	Dump	Censor.
15	Reverse	Reverse.
16	A1 - A2	Sets the Loop In point.
17	B	Sets the Loop Out point.

DENON DN-HC4500

INSTALLATION

MAC

1. Connect your DN-HC4500 to an available USB port.
2. The Denon DN-HC4500 will be detected automatically and will be ready to use.

WINDOWS

1. Connect your DENON DN-HC4500 to an available USB port.
2. You will see the following prompt from Windows: "Can Windows connect to Windows update to search for software?"
3. Select: "No, not this time" followed by "Install automatically"
4. Windows will then notify you that it has found the device: "Found new Hardware DN-HC4500, followed by USB composite device" bubbles will appear.
5. You will be prompted to install 2 drivers. "USB composite device" and "USB audio device". Follow the prompts as per the usual driver installation method for windows.

SETUP

1. Start ScratchLIVE and switch both decks to internal mode.
2. Turn on the Denon DN-HC4500. It will automatically be in PC link mode.
3. You will now be able to control Scratch LIVE with your DENON DN-HC4500.

BASIC OPERATION

To select and load tracks, use the PARAMETERS knob to scroll through your library and crates.

By pressing the PARAMETERS knob can select a crate, sub-crate, and load your track all without touching your computer. The BACK button returns you to the previous location selected.

SETTING CUE POINTS

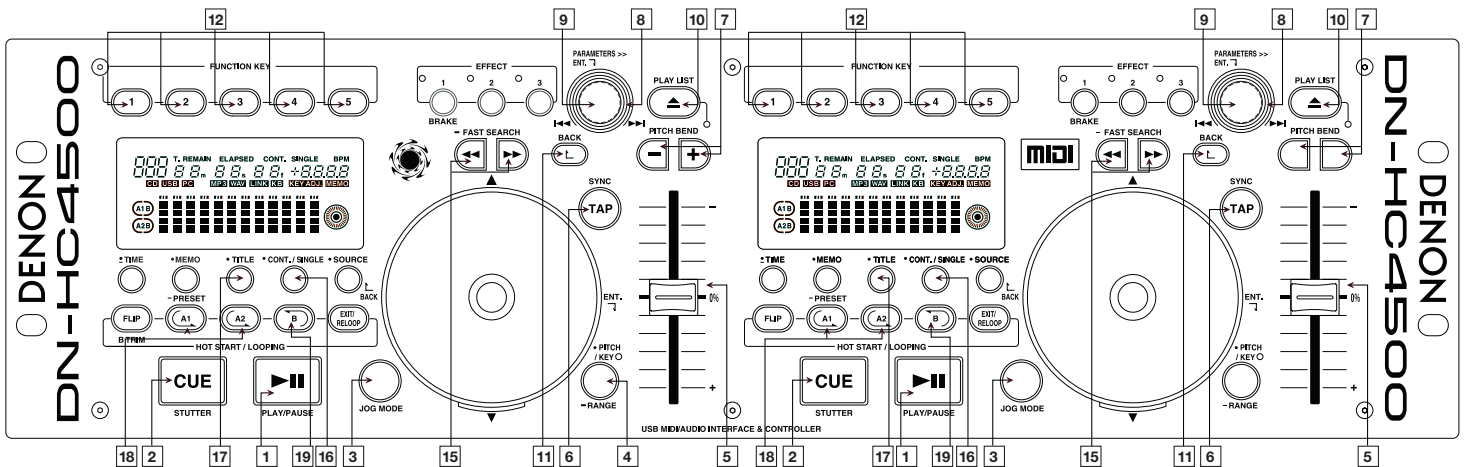
1. Press the "MEMO" button.
2. You can then set your cue points 1-5 using the "FUNCTION" keys along the top.
3. Once set, press the "MEMO" button again to return to the main menu.

Your cues will now be mapped to the "FUNCTION" keys. To delete or change your cue points, simply repeat process 1 -3.

USING LOOPS

There are 2 loop cues you can use on the DN-HC4500 - A1 and A2. To set the beginning ("In") point of the A1 loop, push the "A1" button.

To set the end ("Out") point of the loop push the "B" button. This button sets the end point for both loop cues, depending on which loop is currently playing. To clear all loop points simultaneously, hold down the "FLIP" button for 3 seconds.



	DN-HC4500 CONTROLS	SCRATCH LIVE FUNCTIONALITY
1	Play/Pause	Play/Pause.
2	Cue	CD player style cue.
3	Jog mode	Toggles between scratch and bend modes.
4	Range / Key	Keylock. Press and hold for one second to toggle pitch slider range.
5	Pitch Slider	Pitch Slider +/- 8%.
6	Tap	Tap Tempo have to tap at least 4 times, hold button down to cancel save.
7	Pitch bend +/-	Pitch bend +/-.
8	Parameter knob	Scroll crates / browse / track list.
9	Parameter press	Enter crate / browse column / load track.
10	Eject / Playlist	Eject.
11	Back	Up a level of your browsing.
12	Function Key 1-5	Cue 1-5.
13	Memo	Edit Cue Mode.
14	Time	Toggle time remaining/elapsed for display.
15	Fast search « »	RW / FF.
16	Cont/single	Toggles auto mode.
17	Title	Scrolls the song title if display can't fit name.
18	A1 - A2	Sets the Loop In point.
19	B	Sets the Loop Out point.