

About new functions added to the DN-HD2500 and changed functions

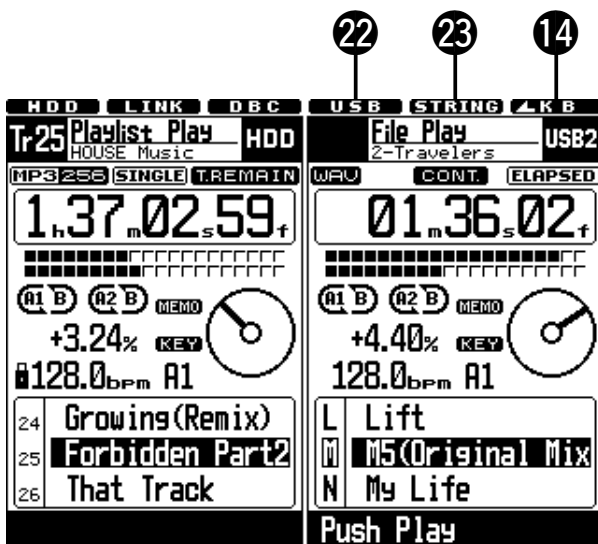
1. Keyboard operation added.

(Refer to "USB Keyboard" on page 3 of the operating instructions.)

	Keyboard	DN-HD2500 Front Panel Button
9	F1	TIME button
10	F2	TITLE/ID3 button
11	F3	CONT./SINGLE button
12	F12	Change of keyboard search method

2. Indicators added/changed at top of screen.

(Refer to "Display" on page 6 of the operating instructions.)



14

Deck for which keyboard is effective is now displayed.



Keyboard input effective for Deck 1



Keyboard input effective for Deck 2



Keyboard input not dependent on deck (Utility Mode, etc.)

22

This lights when an external USB hard disk or USB thumb drive is being accessed.

* When lit, do not disconnect the connected USB device.

23

This lights when a keyboard is connected and the search mode is set to "String Search".

Otherwise it is off.

3. The “String Search” function for searching using the keyboard has been newly added.

(Refer to “Operating from Keyboard” on page 10 of the operating instructions.)

With conventional searching from the keyboard, a list of only those artist, album, title and playlist names whose first letters corresponded to the character string input from the keyboard was displayed.

With the new “String Search” function, names including the character string input from the keyboard, even when the character string is in the middle of the name, are also displayed on the list.

It is possible to switch between conventional searching and the string search function with a simple operation, allowing the selection of the most appropriate search method for different situations.

The search mode is switched using the “F12” key on the keyboard.

When “String Search” is selected, a special icon appears at the upper left of the display.

(Refer to item 2.)

4. A method for switching the deck for which keyboard input is effective has been added.

(Refer to “Operating from Keyboard” on page 10 of the operating instructions.)

Previously it was only possible to switch the deck using the “Tab” key on the keyboard, but now in addition to the “Tab” key it is also possible to operate the PARAMETERS knob when searching to make keyboard input effective for the deck on the side to which the knob was operated.

5. It is now possible to perform the File Memo operation even when the deck on the other side is playing.

(Refer to “[12] MEMO” on page 18 of the operating instructions.)

If the memo operation is possible for the deck on the side for which memo operation is set, the memo operation can be executed even when the deck on the other side is playing.

If the same track is selected for the deck on the other side, however, or if you attempt to switch to the same track, the memo operation cannot be executed.

Furthermore, if while the memo operation is being executed you attempt to search and play the track for which the memo operation is being performed on the other deck, searching is canceled and playback is stopped.

6. More usable characters have been added.
 (Refer to “13 ABOUT CHARACTER INPUT” on page 19 of the operating instructions.)

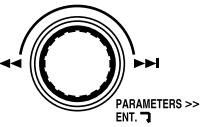

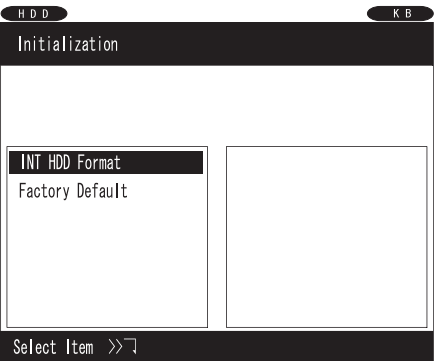
	ID3 Tag (ASCII/Unicode(UTF-8/UTF-16))	File Name/Playlist Name	ID3 Tag (Genre)
ISO 8959-1	ı ç £ ¤ ¥ ¦ § ¨ © ª « ¬ ® ¯ ° ± ² ³ ´ µ ¶ · ¸ ¹ º » ¼ ½ ¾ ¿ À Á Â Ã Ä Å Æ Ç È É Ê Ë Ì Í Î Ï Ð Ñ Ò Ó Ô Õ Ö × Ù Ú Û Ü Ý Þ ß à á â ã ä å æ ç è é ê ë ì í î ï ð ñ ò ó ô ö ÷ ø ù ú û ü ý þ ÿ	ı ç £ ¤ ¥ ¦ § ¨ © ª « ¬ ® ¯ ° ± ² ³ ´ µ ¶ · ¸ ¹ º » ¼ ½ ¾ ¿ À Á Â Ã Ä Å Æ Ç È É Ê Ë Ì Í Î Ï Ð Ñ Ò Ó Ô Õ Ö × Ù Ú Û Ü Ý Þ ß à á â ã ä å æ ç è é ê ë ì í î ï ð ñ ò ó ô ö ÷ ø ù ú û ü ý þ ÿ	ı ç £ ¤ ¥ ¦ § ¨ © ª « ¬ ® ¯ ° ± ² ³ ´ µ ¶ · ¸ ¹ º » ¼ ½ ¾ ¿ À Á Â Ã Ä Å Æ Ç È É Ê Ë Ì Í Î Ï Ð Ñ Ò Ó Ô Õ Ö × Ù Ú Û Ü Ý Þ ß à á â ã ä å æ ç è é ê ë ì í î ï ð ñ ò ó ô ö ÷ ø ù ú û ü ý þ ÿ

Note: You cannot perform any Search functions using these Latin-1 characters
 Be sure to make the region setting at “Region” in the presettings.
 (Refer to item 9.)

7. “Initialization” has been newly added to the utility mode.
 (Refer to “14 UTILITY” on page 20 of the operating instructions.)

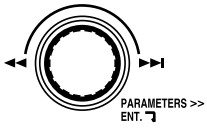
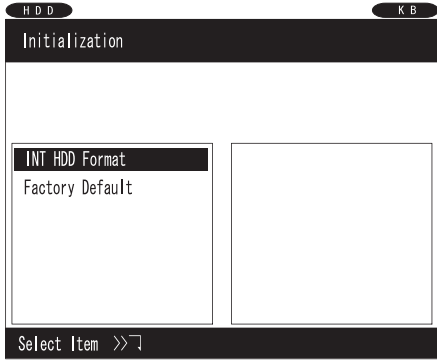

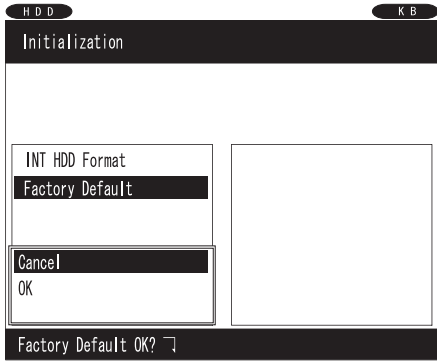
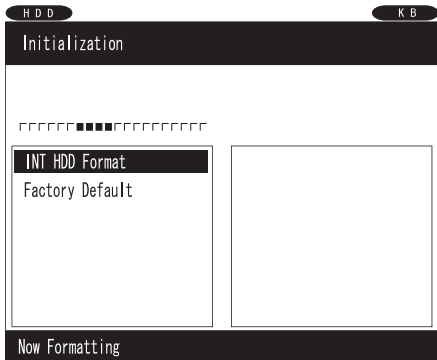

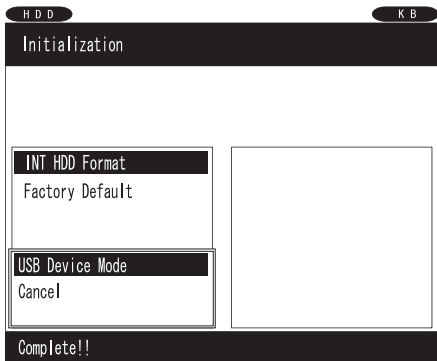
“Initialization” has been added to the top menu in the utility mode.
 When “Initialization” is selected, “Internal HDD Format” and “Factory Default” can be selected.

Note: All music content will be deleted permanently by executing this function, be careful!

<p>1</p>	<p>At the top menu in the utility mode, turn the PARAMETERS knob and select “Initialization”. Press the knob again to set.</p> 	
<p>2</p>	<p>The “Initialization” list is displayed.</p>	

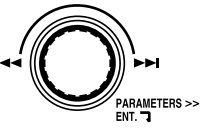
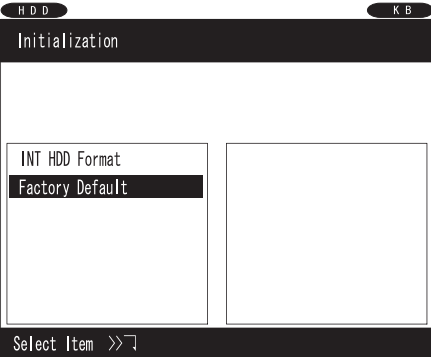
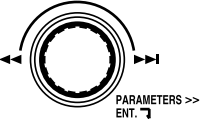
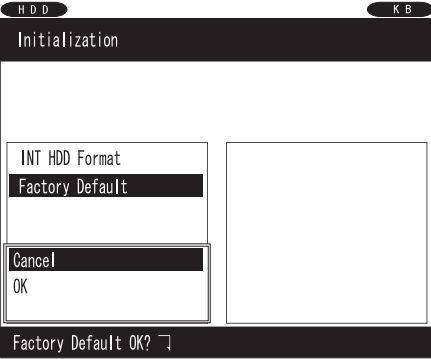
Internal HDD Format

The internal hard disk is formatted in FAT32.

<p>1</p>	<p>Turn the PARAMETERS knob and select "INT HDD Format". Press the knob again to set. A confirmation screen asking whether or not you want to execute the command appears.</p> 	
<p>2</p>	<p>A popup screen for confirming the "INT HDD Format" command appears at the bottom left of the screen.</p> <p>① When "Cancel" is selected, the "Internal HDD Format" command is not executed and the screen returns to step 1.</p> <p>② When "OK" is selected, the "Internal HDD Format" operation starts. The progress bar is displayed.</p> 	
<p>3</p>	<p>The "Internal HDD Format" command is executed.</p> <p>Buttons cannot be operated while the disc is being formatted.</p>	
<p>4</p>	<p>Once the "Internal HDD Format" operation is completed, a popup window asking if you want to switch to the USB device mode appears.</p> <p>① When "USB Device Mode" is selected If connected to a computer, the USB device mode is set.</p> <p>② When "Cancel" is selected, the Database Create operation is performed.</p> 	

Factory Default

This restores the presettings for both decks to as they were upon shipment from the factory.

<p>1</p>	<p>Turn the PARAMETERS knob and select "Factory Default". Press the knob again to set. A confirmation screen asking whether or not you want to execute the command appears.</p> 	
<p>2</p>	<p>A popup screen for confirming the "Factory Default" command appears at the bottom left of the screen.</p> <p>① When "Cancel" is selected, the "Factory Default" command is not executed and the screen returns to step 1.</p> <p>② When "OK" is selected, the "Factory Default" operation starts.</p> 	

8. The "BPM search range" item has been newly added to the preset function.

"BPM search range" is displayed after the "Playlist Search" item.
(Refer to "15 PRESET" on page 23 of the operating instructions.)

BPM search range: 0 / ±1 / ±3* / ±5 / ±10 ("*" indicates the setting upon purchase)

When the BPM search operation is performed with the File Search function, files with BPMs within the range of [BPM value] ± preset [BPM search range] are searched for.

Example: When "Preset" is set to "±3" and "BPM120" is selected at "File Search", tracks whose ID3Tag data is BPM 117 to BPM 123 are searched for.

9. The "Region" item has been newly added to the preset function.

"Region" is displayed after the "LCD Contrast" item.
(Refer to "15 PRESET" on page 23 of the operating instructions.)

Region: other / USA* ("*" indicates the setting upon purchase)

Set this to the same regional settings as the computer on which DENON DJ Music Manager is installed.

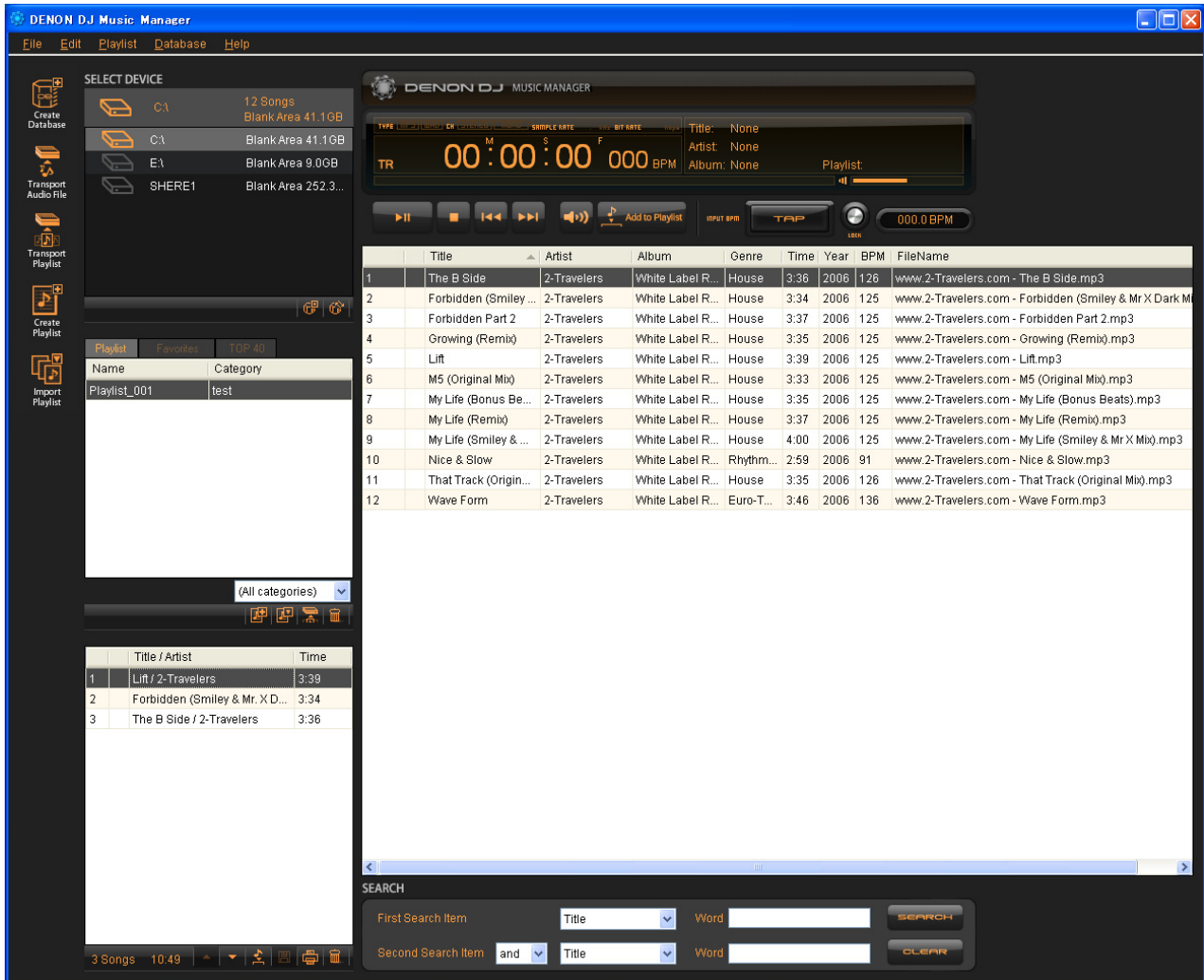
For Example, anywhere outside of the USA should be set to "Other"
MAC users should also select "Other"

10. Restarting is now possible by operating keys on the front panel.

When "FILTER" and "B" on Deck 1 and "FILTER" and "B" on Deck 2 are pressed for 3 seconds, the unit restarts from the initial startup screen.

About new functions added to DENON DJ Music Manager and changed functions

1. "FileName" has been newly added to the audio file list display section at the right of the screen. (Refer to "Description of screen" on page 2 of the operating instructions.)



2. Data on files that could not be registered when the “Database Create” command was executed can be stored in “csv” format.

(Refer to “Creation and updating of databases” on page 5 of the operating instructions.)

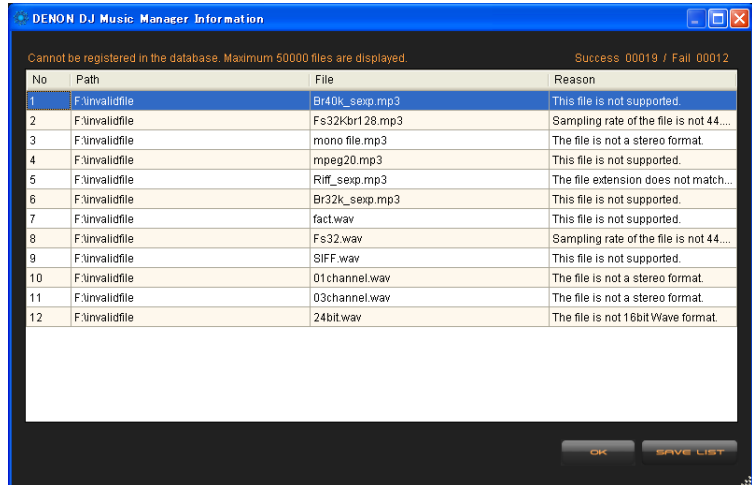
A list of files that could not be registered when the “Database Create” command was executed is displayed.

Click 

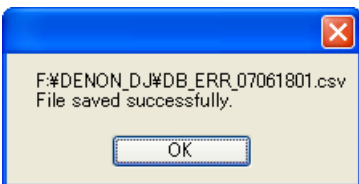
Close the window to complete the Database Create procedure.

Click 

A popup for confirming where the file is to be saved and the file name appears.



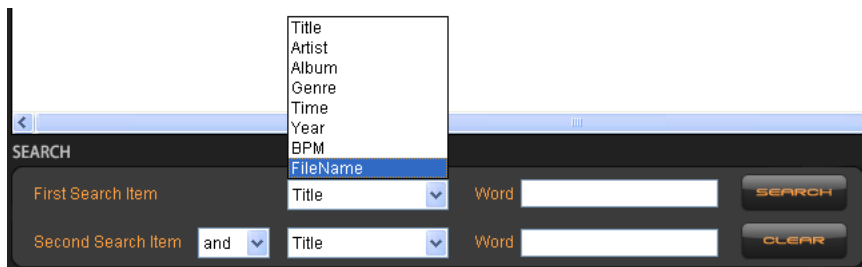
No	Path	File	Reason
1	F:\invalidfile	Br40k_sexp.mp3	This file is not supported.
2	F:\invalidfile	Fs32kbr128.mp3	Sampling rate of the file is not 44...
3	F:\invalidfile	mono file.mp3	The file is not a stereo format.
4	F:\invalidfile	mpeg20.mp3	This file is not supported.
5	F:\invalidfile	Riff_sexp.mp3	The file extension does not match...
6	F:\invalidfile	Br32k_sexp.mp3	This file is not supported.
7	F:\invalidfile	fact.wav	This file is not supported.
8	F:\invalidfile	Fs32.wav	Sampling rate of the file is not 44...
9	F:\invalidfile	SIFF.wav	This file is not supported.
10	F:\invalidfile	01channel.wav	The file is not a stereo format.
11	F:\invalidfile	03channel.wav	The file is not a stereo format.
12	F:\invalidfile	24bit.wav	The file is not 16bit Wave format.



When “OK” is selected, the data is stored in “csv” format in the specified folder.

3. It is now possible to search for tracks by FileName.

(Refer to “Searching for files” on page 7 of the operating instructions.)



The search criteria are: “Title”, “Artist”, “Album”, “Genre”, “Time”, “Year”, “BPM” and “FileName”.

4. Automatic detection of the BPM is now possible.

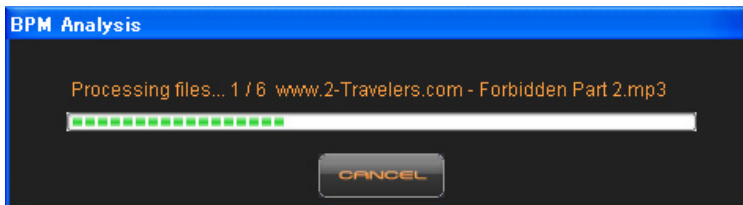
1. Select the files whose BPM values you want to detect.

2. Select "File" in the menu section.

3. Select "AutoBPM".

Analysis of the selected file to detect its BPM begins.

	Title	Artist	Album	Genre	Time	Year	BPM	FileName
1	The B Side	2-Travelers	White Label R...	House	3:36	2006		www.2-Travelers.com - The B Side.mp3
2	Forbidden (Smiley ...	2-Travelers	White Label R...	House	3:34	2006		www.2-Travelers.com - Forbidden (Smiley & Mr X Dark M...
3	Forbidden Part 2	2-Travelers	White Label R...	House	3:37	2006		www.2-Travelers.com - Forbidden Part 2.mp3
4	Growing (Remix)	2-Travelers	White Label R...	House	3:35	2006		www.2-Travelers.com - Growing (Remix).mp3
5	Lift	2-Travelers	White Label R...	House	3:39	2006		www.2-Travelers.com - Lift.mp3
6	M5 (Original Mix)	2-Travelers	White Label R...	House	3:33	2006		www.2-Travelers.com - M5 (Original Mix).mp3
7	My Life (Bonus Be...	2-Travelers	White Label R...	House	3:35	2006		www.2-Travelers.com - My Life (Bonus Beats).mp3
8	My Life (Remix)	2-Travelers	White Label R...	House	3:37	2006		www.2-Travelers.com - My Life (Remix).mp3
9	My Life (Smiley & ...	2-Travelers	White Label R...	House	4:00	2006		www.2-Travelers.com - My Life (Smiley & Mr X Mix).mp3
10	Nice & Slow	2-Travelers	White Label R...	Rhythm...	2:59	2006		www.2-Travelers.com - Nice & Slow.mp3
11	That Track (Origin...	2-Travelers	White Label R...	House	3:35	2006		www.2-Travelers.com - That Track (Original Mix).mp3
12	Wave Form	2-Travelers	White Label R...	Euro-T...	3:46	2006		www.2-Travelers.com - Wave Form.mp3



4. A list of the BPM values detected through file analysis is displayed. The detected BPM values are stored in the files' ID3Tag.

	Title	Artist	Album	Genre	Time	Year	BPM	FileName
1	The B Side	2-Travelers	White Label R...	House	3:36	2006	126	www.2-Travelers.com - The B Side.mp3
2	Forbidden (Smiley ...	2-Travelers	White Label R...	House	3:34	2006	126	www.2-Travelers.com - Forbidden (Smiley & Mr X Dark M...
3	Forbidden Part 2	2-Travelers	White Label R...	House	3:37	2006	125	www.2-Travelers.com - Forbidden Part 2.mp3
4	Growing (Remix)	2-Travelers	White Label R...	House	3:35	2006	125	www.2-Travelers.com - Growing (Remix).mp3
5	Lift	2-Travelers	White Label R...	House	3:39	2006	125	www.2-Travelers.com - Lift.mp3
6	M5 (Original Mix)	2-Travelers	White Label R...	House	3:33	2006	125	www.2-Travelers.com - M5 (Original Mix).mp3
7	My Life (Bonus Be...	2-Travelers	White Label R...	House	3:35	2006	125	www.2-Travelers.com - My Life (Bonus Beats).mp3
8	My Life (Remix)	2-Travelers	White Label R...	House	3:37	2006	125	www.2-Travelers.com - My Life (Remix).mp3
9	My Life (Smiley & ...	2-Travelers	White Label R...	House	4:00	2006	125	www.2-Travelers.com - My Life (Smiley & Mr X Mix).mp3
10	Nice & Slow	2-Travelers	White Label R...	Rhythm...	2:59	2006	125	www.2-Travelers.com - Nice & Slow.mp3
11	That Track (Origin...	2-Travelers	White Label R...	House	3:35	2006	125	www.2-Travelers.com - That Track (Original Mix).mp3
12	Wave Form	2-Travelers	White Label R...	Euro-T...	3:46	2006	133	www.2-Travelers.com - Wave Form.mp3

Note:

- Files with BPM's less than "60" cannot be analyzed.
- Files that are registered which already have a BPM less than "60" will not be displayed by the Music Manager's BPM field. The BPM field will appear "blank" for these files.