

Preset Configuration for DN-S1200

- ✓ Ensure that both Denon DN-S1200 controllers are powered on and connected via USB to your computer (PC/MAC)
- ✓ On the 1st DN-S1200 (or Left Deck), initiate the preset mode by holding the “preset” button down for 2 seconds, then turn the parameter knob to “MIDI CH SET”, push down on the parameter knob and select “1” (it should already be set there by default) Push down on the parameter knob again for next step.

(Left Deck)



- ✓ Turn the parameter knob “UNIT NO SET”, push down on the parameter knob and select “1”, then press the CUE button to exit and save.

(Left Deck)



- ✓ On the 2nd DN-S1200 (or Right Deck), initiate the preset mode by holding the “preset” button down for 2 seconds, then turn the parameter knob to “MIDI CH SET”, push down on the parameter knob and select “2”. Push down on the parameter knob again for next step

(Right Deck)



- ✓ Turn the parameter knob “UNIT NO SET”, push down on the parameter knob and select “2”, then press the CUE button to exit and save.

(Right Deck)



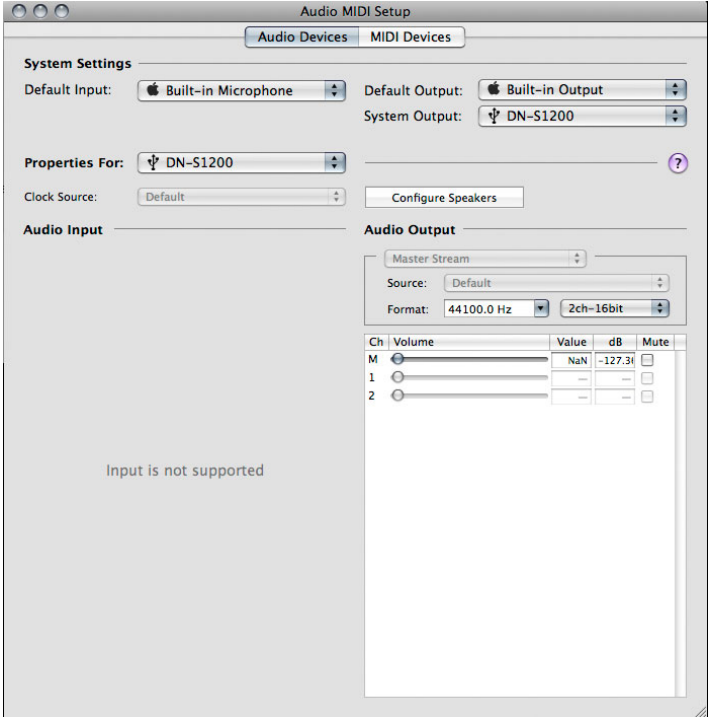
*You have now completed the Preset Configuration.

*Set each player to “PC Mode”

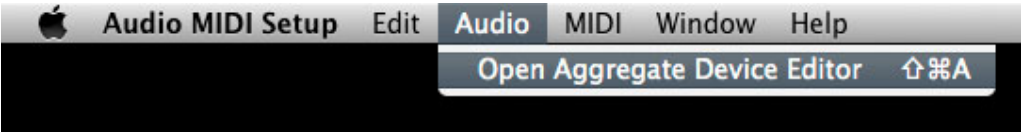
After download of the software unzip the setup file and double click it to install Traktor PRO.

4. Configuration of DN-S1200 with MAC Audio/MIDI Setup

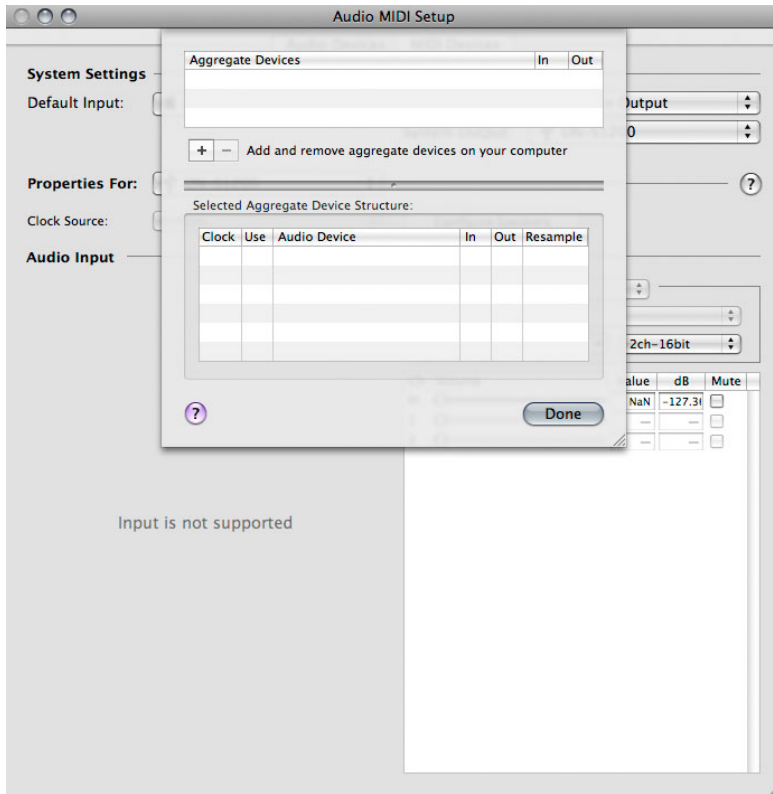
- On the MAC, go to **Applications > Utilities > Audio MIDI Setup**



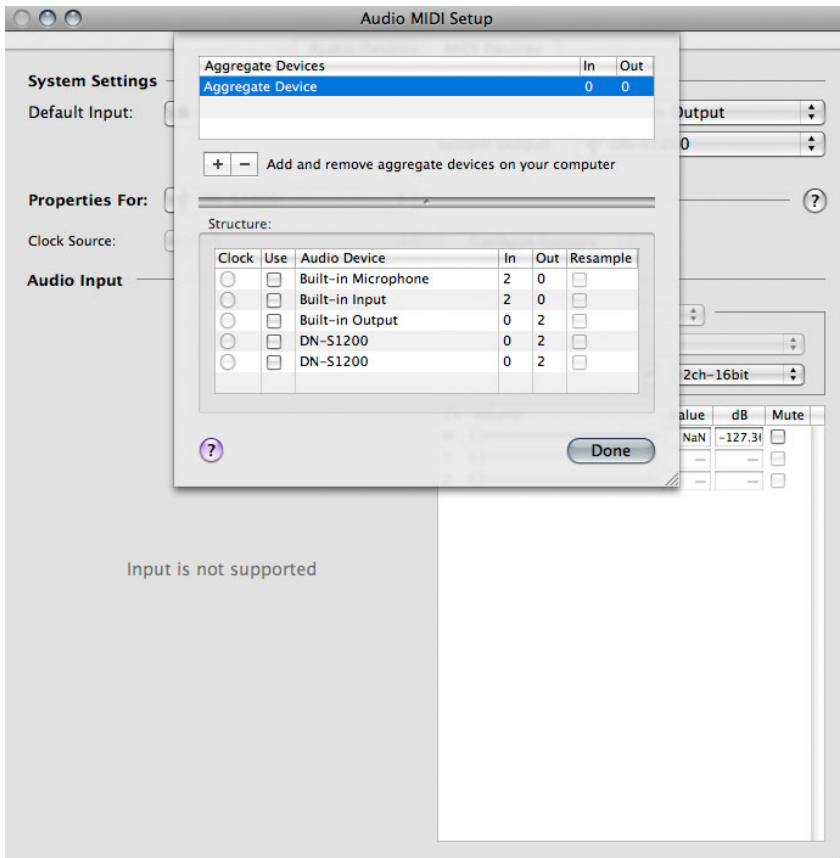
- At the top Menu bar select **Audio > Open Aggregate Device Editor**



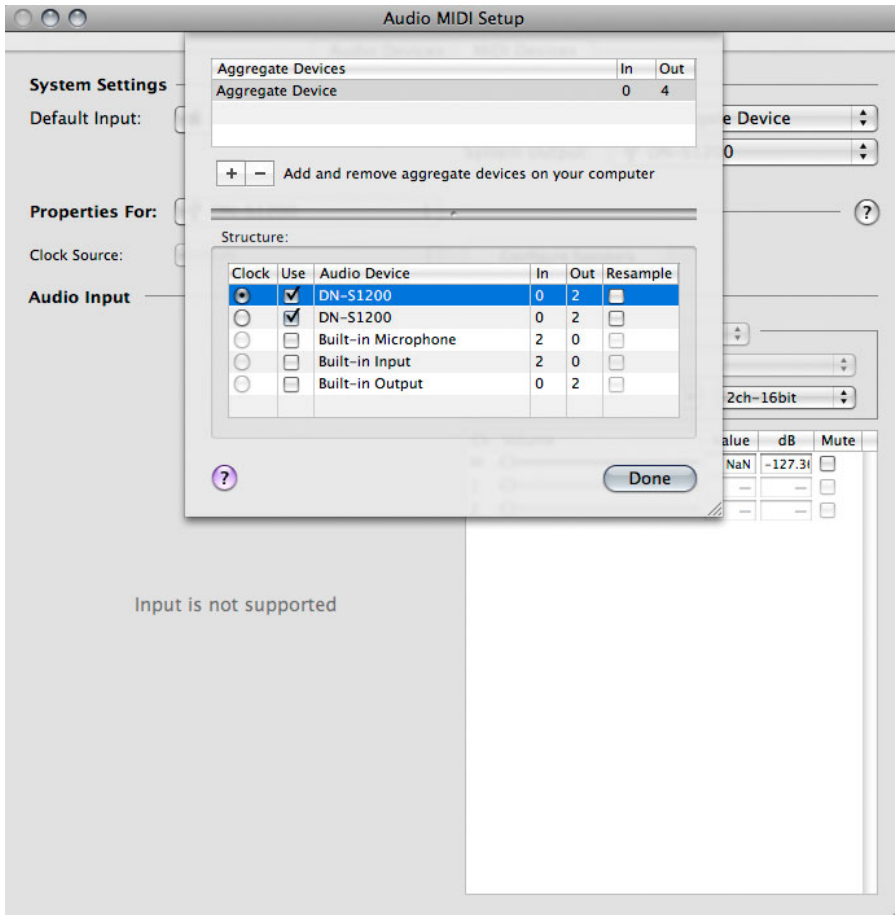
- Click on the “+” symbol to add a new aggregate device



- You will now see the option to select the 2 DN-S1200 units.



- Select both DN-S1200 units by putting check marks in the "Use" column, then press Done.



- You can now exit out of Audio MIDI Setup.