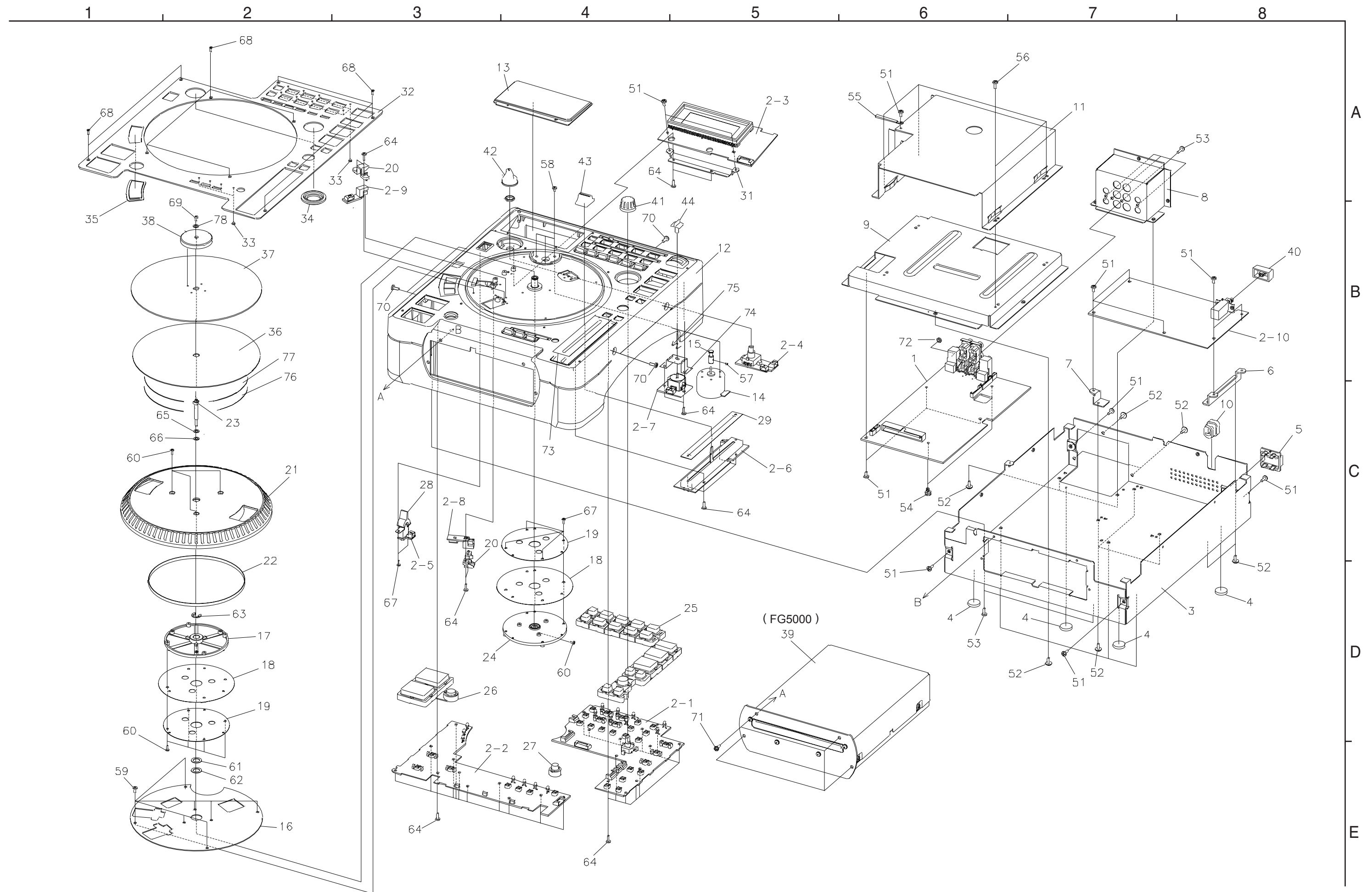


EXPLODED VIEW



Note: The symbols in the column "Remarks" indicate the following destinations.

E3: U.S.A. model, Csnada model

E2: Europe model

PARTS LIST OF EXPLODED VIEW

Ref. No.	Part No.	Part Name	Remarks	Q'ty	New	Ref. No.	Part No.	Part Name	Remarks	Q'ty	New
1	GU-3482	DSP PWB UNIT		1		44	113 1952 107	SEARCH KNOB		1	*
2	GU-3483	PANEL PWB UNIT	for E3	1		54	412 2814 031	CARD SPACER (L=4)		2	
2	GU-3483A	PANEL PWB UNIT	for E2	1		55	445 8028 009	CORD HOLDER		1	
2-1		PANEL UNIT				61	475 1187 003	WASHER 13/8.2		1	*
2-2		PANEL2 UNIT				62	475 1161 058	WASHER 8.2/12		2	*
2-3		FLT UNIT				63	476 1006 006	6 E RING ZNP		1	
2-4		SCRATCH SOURCE UNIT				65	475 1187 016	WASHER 7/4.1		1	*
2-5		SCRATCH DIR UNIT				66	475 1161 016	WASHER		1	*
2-6		SLIDE VR UNIT				72	461 1150 002	SP WASHER	for E2	1	
2-7		SCAN VR UNIT				73	146 2308 103	FADER PLATE		1	*
2-8		DISC SENSOR UNIT				74	412 5027 003	VR BRACKET	for E2	1	*
2-9		TABLE SENSOR UNIT				75	463 0957 008	SPRING	for E2	1	*
2-10		POWER UNIT				76	421 0810 002	ANTI-STATIC SHEET		1	
3	411 2027 207	CHASSIS		1	*	77	421 0809 000	SLIP SHEET		1	
4	461 0706 127	FOOT SHEET		4		78	475 1187 029	WASHER 5/2.2		1	
5	146 2302 002	P.SW KNOB GUIDE		1	*	★	204 6752 006	40P FLAT CABLE	CX401	1	*
6	412 4921 003	PWB BRACKET		1		★	203 6577 000	4P LC-VH CON.CORD	CX941	1	
7	412 5003 001	PWB SUPPORT		3	*	▲ ★	206 2155 001	AC CORD W/CON.E3	for E3	1	
8	412 5004 107	JACK BRACKET		1	*	▲ ★	206 2089 106	AC CORD W/CON.E2	for E2	1	
9	412 5005 009	MAIN BRACKET		1	*	★	445 8028 009	CORD HOLDER		1	
10	445 0084 009	CORD BUSH	for E3	1		★	203 6596 007	4P PH CON CORD		1	*
10	445 0056 008	CORD BUSH	for E2	1		★	445 0033 005	WIRE CLAMP BAND		2	
11	412 5006 008	MECHA COVER		1	*	★	204 6307 037	11P KR-KR CON.CORD	CW911	1	*
12	146 2303 108	INNER COVER ASS'Y		1	*	★	342 0027 000	FERRITE CORE		1	
13	146 2305 009	WINDOW		1		★	513 3870 005	RATING SHEET	for E3	1	*
14	217 0181 006	LOADING MOTOR		1		★	513 3870 018	RATING SHEET	for E2	1	*
15	422 0670 106	MOTOR PULLY		1	*	★	513 2303 007	VERSION LABEL		1	
16	441 1974 006	BASE PLATE		1	*	★	513 1519 009	MANUFAC.DATE LABEL	for E3	1	
17	421 0798 001	PLATTER HOLDER		1	*	★	513 3776 002	E3 LABEL	for E3	1	
18	421 0799 000	SCALE DISK		2	*	★	513 3384 009	C-UL MARK US (813)	for E3	1	
19	441 1975 005	DISK FIX PLATE		2	*	★	513 3159 001	FCC/CLASS B CAUTION	for E3	1	
20	443 1573 005	S.COVER (GP1A70R)		2		★	513 0985 003	INST LABEL	for E2	1	
21	421 0808 001	PLATTER (TK)		1	*	★	513 2521 009	CE LABEL	for E2	1	
22	423 0079 108	BELT		1	*	★	513 3253 004	C-TICK LABEL	for E2	1	
23	422 0669 201	DISC HOLDER SHAFT		1	*	SCREWS					
24	421 0801 105	WHEEL ASS'Y		1	*	51	473 7002 005	3X6 CBTS(S)-Z		15	
25	119 0118 102	R.KEY (FUNCTION)		1	*	52	473 8007 083	3X8 CUP SCREW		14	
26	119 0119 208	R KEY (PLAY/PAUSE)		1	*	53	473 7500 044	3X8 CBTS (P)-B		4	
27	119 0120 006	R.KEY (PITCH)		1	*	56	473 7015 005	3X6 CBTS(S)-B		4	
28	113 1950 002	TOGGLE SW KNOB		1	*	57	474 4300 004	2.6X4 BSS (A)		1	
29	122 0241 004	BLIND SHEET (SL)		1	*	58	471 3202 010	2.6X5 CBS		2	
31	412 5007 007	FL BRACKET		1	*	59	473 7505 010	2.6X6 CBTS (P)-Z		7	
32	144 2823 103	TOP PANEL		1	*	60	471 3103 012	2X6 CBS		8	
33	143 1163 007	LENS		12		64	473 7505 007	2.6X8 CBTS (P)-Z		35	
34	146 2306 008	KNOB (MARU) LENS		2		67	473 7506 022	2X6 CBTS(P)-B		6	
35	146 2307 007	WINDOW (SELECT)		1		68	473 8087 003	2X6 CFTS(B)-B		9	*
36	421 0802 007	SLIP MAT		1	*	69	475 5122 006	2X4 HSHB		1	*
37	421 0803 307	SLIP DISC		1	*	70	473 7002 021	3X8 CBTS (S)-B		5	
38	421 0820 005	STABILIZER		1	*	71	471 1832 013	M3-SEMS SCREW(6W)		4	*
39	FG5000	DRIVE UNIT		1	*						
40	113 1689 001	P.SW KNOB		1							
41	112 0902 003	KNOB (MARU)		1	*						
42	112 0903 002	SELECT KNOB		1	*						
43	113 1951 001	FADER KNOB		1	*						