



MPK[®]mini^{IV}

**FL Studio
Setup Guide**
English

Introduction

This guide will help you set up your MPK[®] mini IV to control the FL Studio software.

Important: Before you use MPK[®] mini IV for the first time, we recommend checking for available firmware updates. These updates add exciting new features and improvements, so staying up-to-date ensures the best experience with MPK[®] mini IV. Visit akaipro.com and go to the MPK[®] mini IV product page to check for available updates for download, then follow the instructions to update your device.

Support

To get started with MPK[®] mini IV, download your included software, and access the hardware *User Guide*, visit inmusic.to/mini4begin.

For additional product support, visit support.akaipro.com.

Setup

To begin, download and install the latest FL Studio control script:

1. Close FL Studio if it is running before beginning the installation.
2. Download the latest FL Studio control script by going to inmusic.to/mini4begin.
3. Open the downloaded file and follow the instructions to complete the installation.

You can now open connect MPK[®] mini IV and open FL Studio:

1. Use the included USB-C[®] cable to connect MPK[®] mini IV's **USB-C[®] Port** to an available USB 3.0 port on your computer (powered on).

Note: If connecting to a USB hub, make sure a powered hub is used.

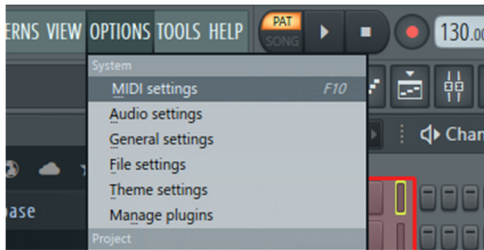
2. Press the **PLUGIN/DAW** button on MPK[®] mini IV to ensure the DAW preset is selected (button is lit red).
3. Open FL Studio.

If you have installed the control script, it should automatically assign and enable the appropriate MIDI ports for MPK[®] mini IV. If you have any issues, or if you need to manually set the MIDI ports, use the directions in the following [Windows Setup](#) and [macOS Setup](#) sections, depending on your operating system.

If you have any further issues, refer to the [Troubleshooting](#) chapter for more information.

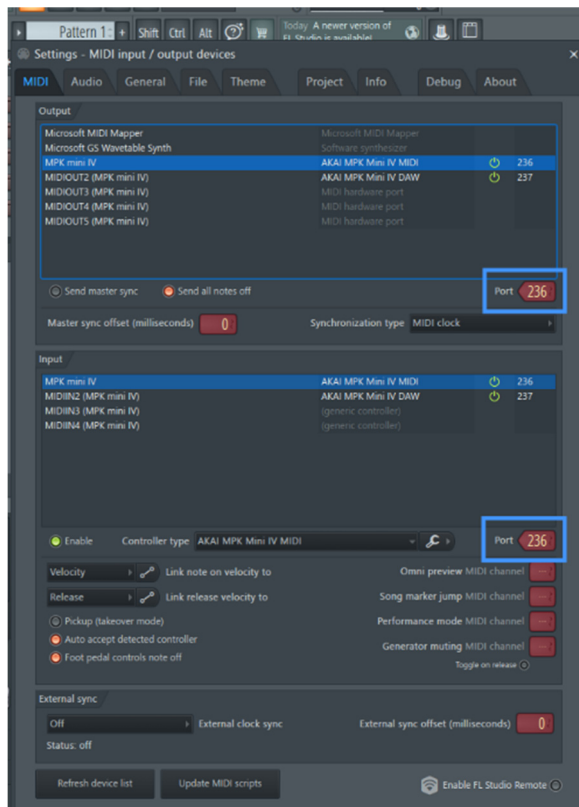
Windows Setup

1. In FL Studio, open the **Options > MIDI Settings** menu.

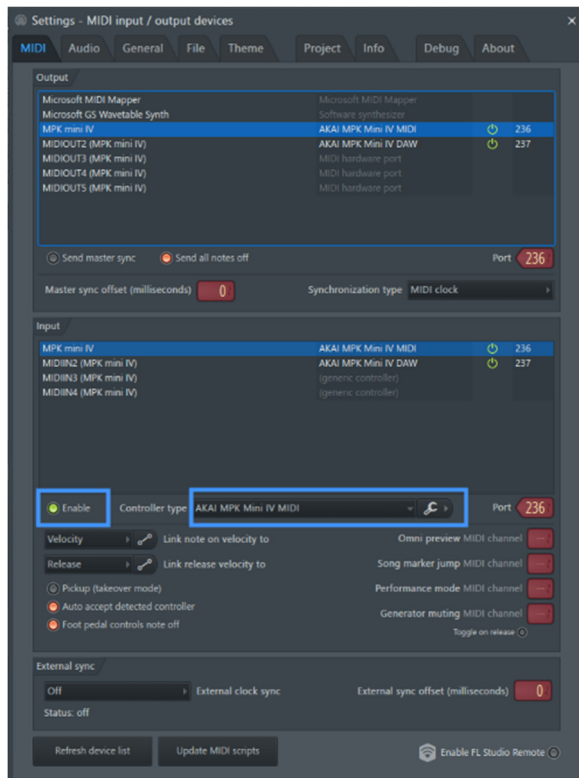


2. In the MIDI Settings menu, enable the **MPK® mini IV MIDIIN2** and **MIDIOUT2** ports by assigning them port numbers if they are not already assigned.
 - a. Select the MIDI Port.
 - b. Drag the **Port Number** control to enable and assign the inputs and outputs to a port.

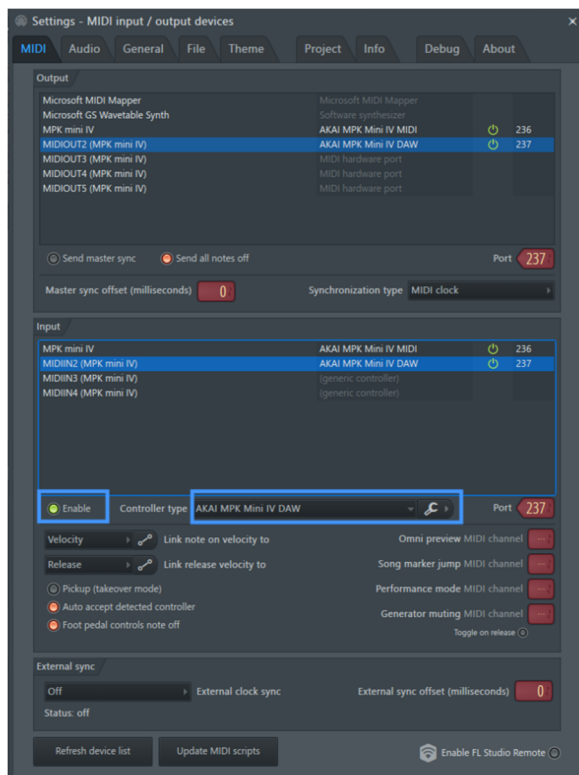
IMPORTANT: Use separate port numbers for the MIDI and DAW ports. However, the input and output for the MIDI and DAW ports should respectively share the same port number. For example, set the MIDI input and output ports to 236, and the DAW input and output ports to 237.



3. Select the **MPK mini IV** input and enable as a controller by clicking **Enable**. Make sure that the **Controller type** dropdown menu is set to **AKAI MPK Mini IV MIDI**.

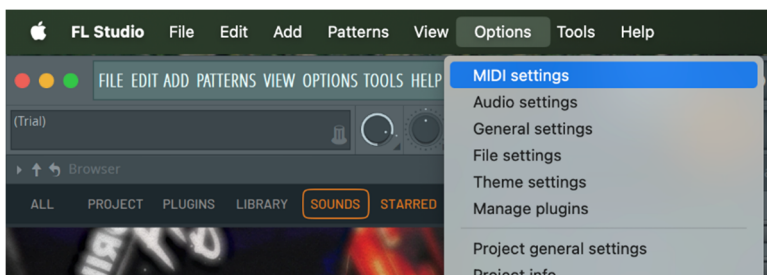


4. Select the **MPK mini IV MIDIIN2** input and enable as a controller by clicking **Enable**. Make sure that the **Controller type** dropdown menu is set to **AKAI MPK Mini IV DAW**.



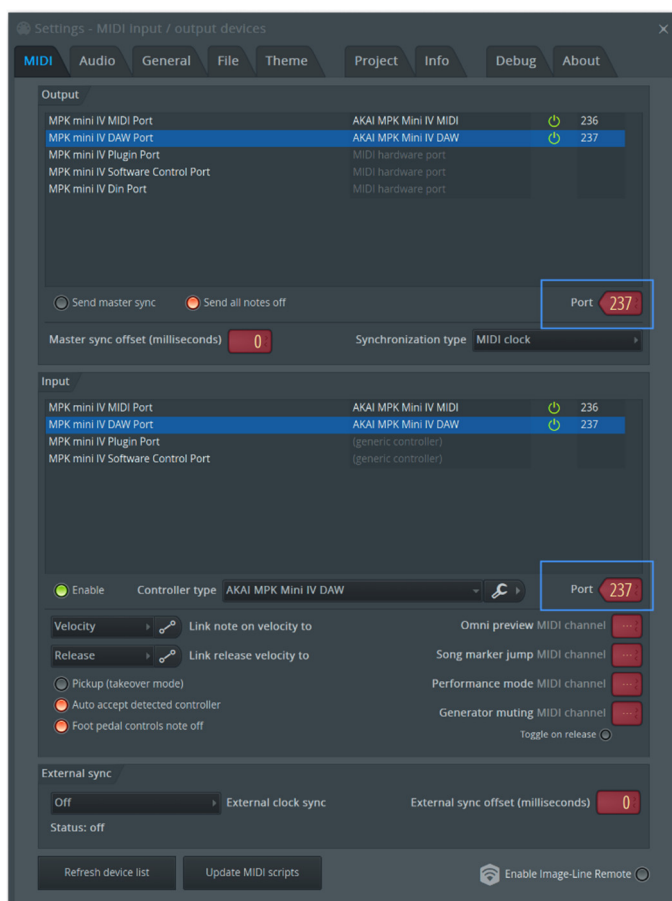
macOS Setup

1. In FL Studio, open the **Options > MIDI Settings** menu.

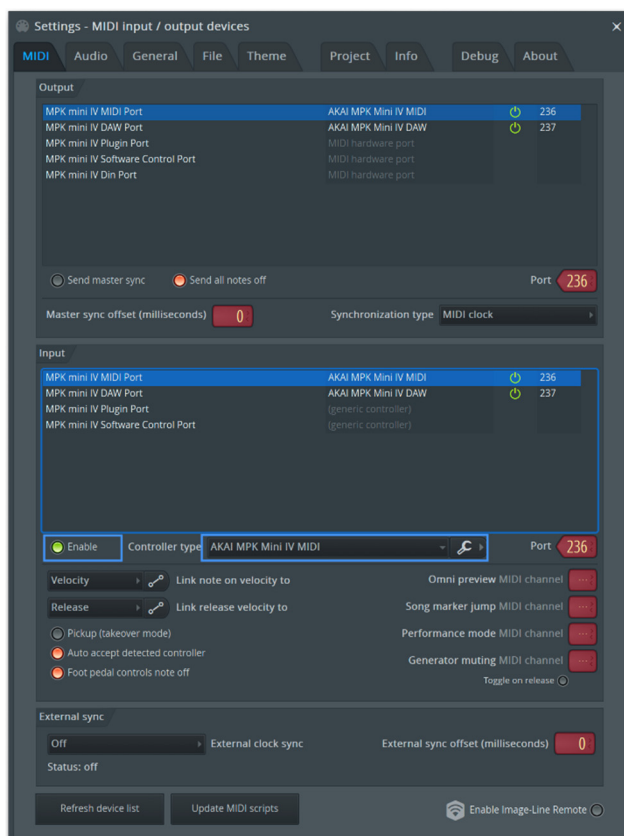


2. In the MIDI Settings menu, enable the MPK[®] mini IV MIDI and DAW port by assigning a port number if one is not already assigned.
 - a. Select the MIDI Port.
 - b. Drag the **Port Number** control to enable and assign the inputs and outputs to a port.

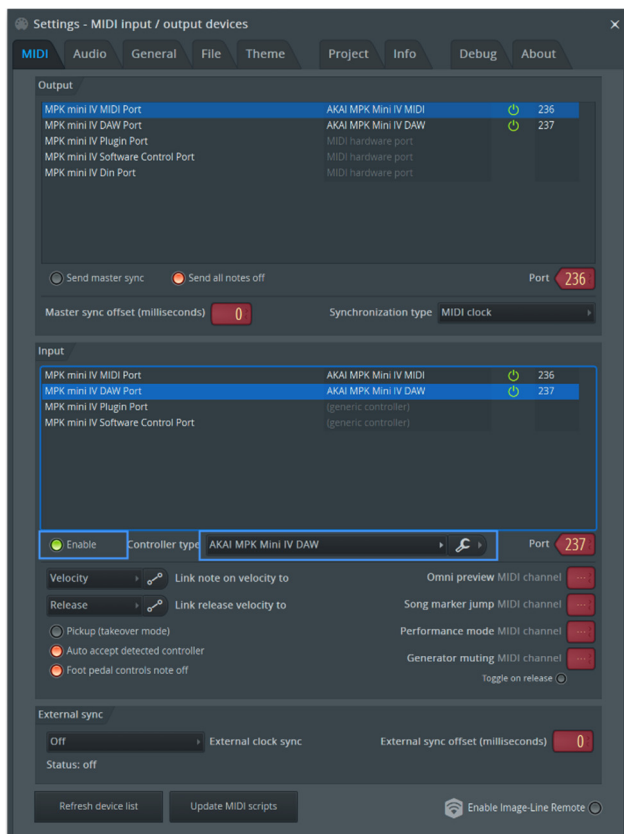
IMPORTANT: Use separate port numbers for the MIDI and DAW ports. However, the input and output for the MIDI and DAW ports should respectively share the same port number. For example, set the MIDI input and output ports to 236, and the DAW input and output ports to 237.



3. Select the **MPK mini IV MIDI** input and enable as a controller by clicking **Enable**. Make sure that the **Controller type** dropdown menu is set to **AKAI MPK Mini IV MIDI**.



4. Select the **MPK mini IV DAW** input and enable as a controller by clicking **Enable**. Make sure that the **Controller type** dropdown menu is set to **AKAI MPK Mini IV DAW**.



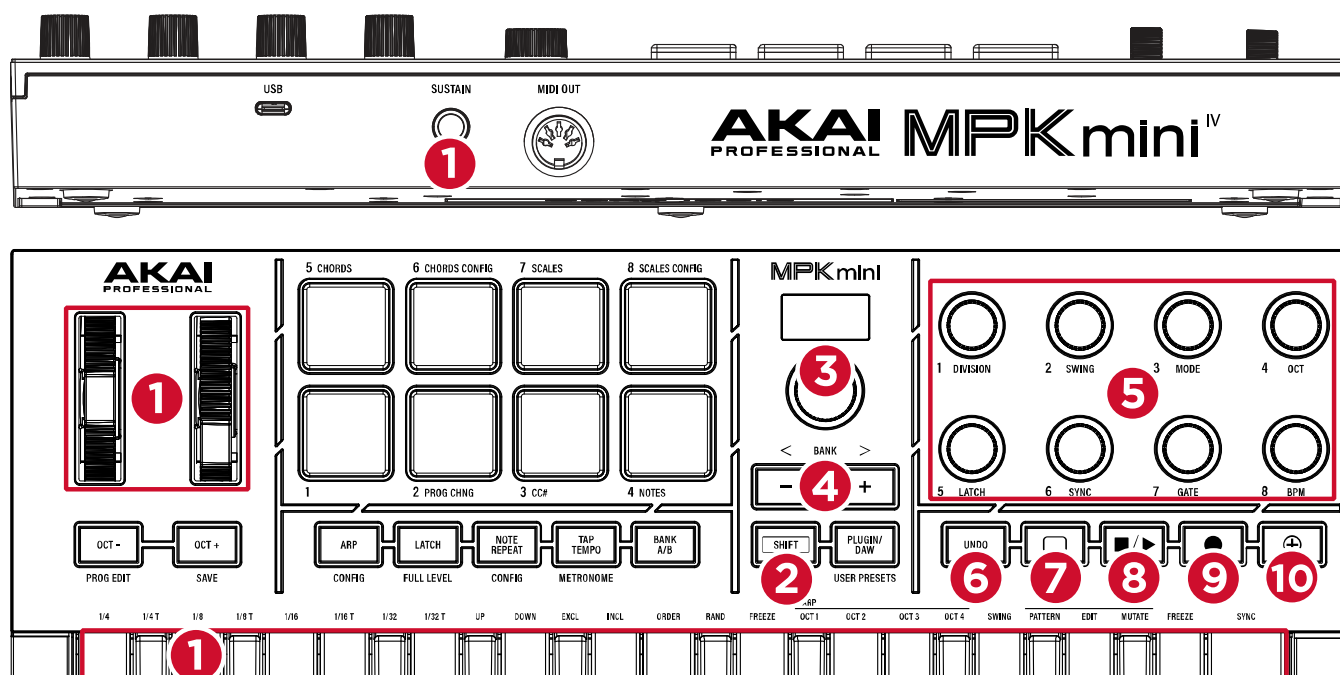
About MIDI Ports

MPK[®] mini IV features five different MIDI ports that are used for communication. Understanding what these ports are used for can help you set it up properly with your software or hardware.

Port #	Name	Description
1	MPK Mini IV MIDI Port	<p>This port will send keybed, drum pad, pitch and modwheel, sustain pedal, and knob control data.</p> <p>Messages sent to this port are expected to be recorded and edited by a Host DAW. Messages received from this port can be resent to the physical 5-pin MIDI output port, depending on the settings.</p> <p>All Presets will send MPK[®] mini IV performance data on this port by default.</p>
2	MPK Mini IV DAW Port	<p>This port will send all interface controls, screen controls, and transport controls to a connected supported DAW.</p> <p>When using the DAW Preset, this port must be enabled in the DAW software to access the DAW control script.</p>
3	MPK Mini IV Plugin Port	<p>This port will send all interface controls, screen controls, and transport controls to the Studio Instrument Collection (SIC) software.</p> <p>When using the Plugin Preset, this port must be enabled in the SIC software to access the SIC control script.</p>
4	MPK Mini IV Software Control Port	<p>This port will send all interface controls, screen controls, and transport controls for generic mapping.</p>
5	MPK Mini IV Din Port	<p>This port is the physical 5-pin MIDI output on the rear panel of MPK[®] mini IV.</p> <p>You can choose to send incoming MIDI data from the USB-C[®] port or the internal hardware MIDI data to this port by adjusting the DINsrc setting in the MPK[®] mini IV Global menu.</p>

Control Map

This chapter describes the functions of MPK® mini IV's compatible controls when using FL Studio.



1. Keyboard, Pitch Wheel, Modulation Wheel, Sustain Input: These basic performance controls are used for controlling and playing virtual instruments in FL Studio. These controls send their data on MIDI Port 1 and are not part of the additional control script.

2. SHIFT: This button provides access to secondary functions when using MPK® mini IV with FL Studio. Press and hold it and then press another button or pad to access its secondary function.

3. Encoder: Turn this knob to select channels.

4. -/+: Press these buttons to move to the previous or next bank of knob controls. See the following [Knob Modes](#) section to learn more.

Hold **SHIFT** and press this button to switch between Knob Modes.

5. Knobs: These endless knobs can be used for two different functions, which you can toggle between by holding **SHIFT** and pressing the **-/+** buttons. See the following [Knob Modes](#) section to learn more about how each mode functions.

6. UNDO: Press this button to undo the last action in FL Studio.

REDO: Hold **SHIFT** and press this button to redo the last action undone in FL Studio.

7. Loop: Press this button to turn loop playback on and off in FL Studio.

8. Stop/Play: Press this button to stop or start playback in FL Studio.

Hold **SHIFT** and press this button to switch between Pattern and Song Mode in FL Studio.

9. Record: Press this button to enable recording in FL Studio.

Quantize: Hold **SHIFT** and press this button to turn quantization on or off in FL Studio. This allows the notes you play to snap to the recording grid according to the current time division.

10. Overdub: Press this button to enable MIDI Blend Record in FL Studio.

Knob Modes

The MPK® mini IV knobs can be used in five different modes with FL Studio. You can cycle between each mode by holding **SHIFT** and pressing the **-/+ buttons**. The **display** will show the currently selected mode.

Channel Volume

In this mode, the knobs control channel volume in banks of eight. The current bank is highlighted in FL Studio.

Channel Pan

In this mode, the knobs control channel pan in banks of eight. The current bank is highlighted in FL Studio.

Mixer Volume

In this mode, the knobs control volume for mixer channels in banks of eight. The current bank is highlighted in FL Studio.

Mixer Pan

In this mode, the knobs control pan for mixer channels in banks of eight. The current bank is highlighted in FL Studio.

EQ

In this mode, the knobs control EQ settings for the currently selected mixer channel. Knobs **1-3** control **Gain**, and Knobs **5-7** control **Frequency**. Hold **Shift** and turn the encoders for fine control.

User

In this mode, the knobs are unmapped, allowing for free assignment of controls within FL Studio. There are four banks of available controls, which can be accessed by pressing the **-/+ buttons**. Assign controls using **Multilink** in FL Studio.

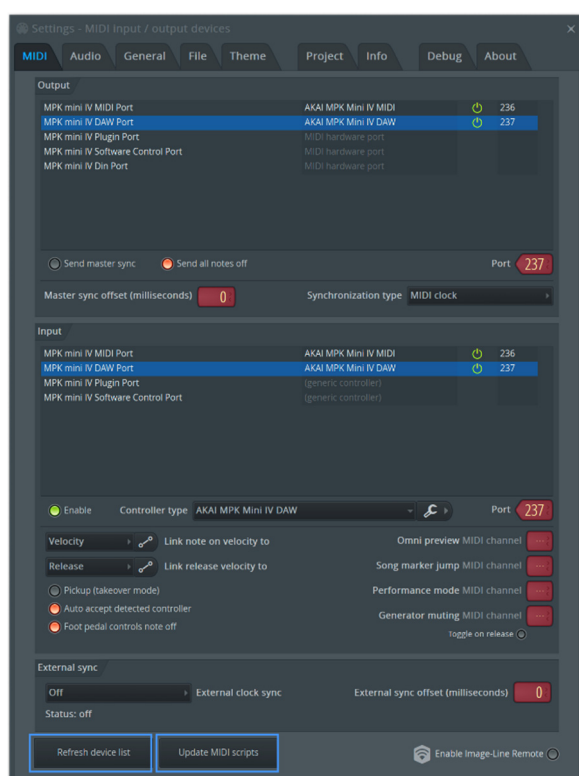
Troubleshooting

If you are experiencing trouble using the FL Studio control script, you can try the following.

Check that DAW Control Mode is enabled on MPK[®] mini IV: Press the **PLUGIN/DAW** button on your MPK[®] mini IV so that it is lit red, indicating DAW mode is active.

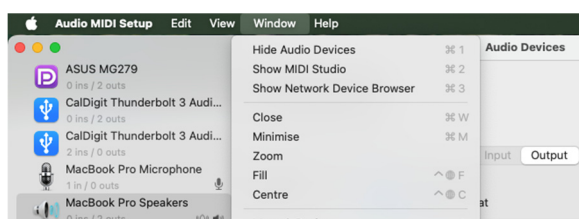
For macOS users, update MIDI scripts and refresh your device list:

1. In FL Studio, open the **Options > MIDI Settings** menu.
2. Click, **Update MIDI scripts** and wait for the update to complete.
3. Once completed, click **Refresh device list**.

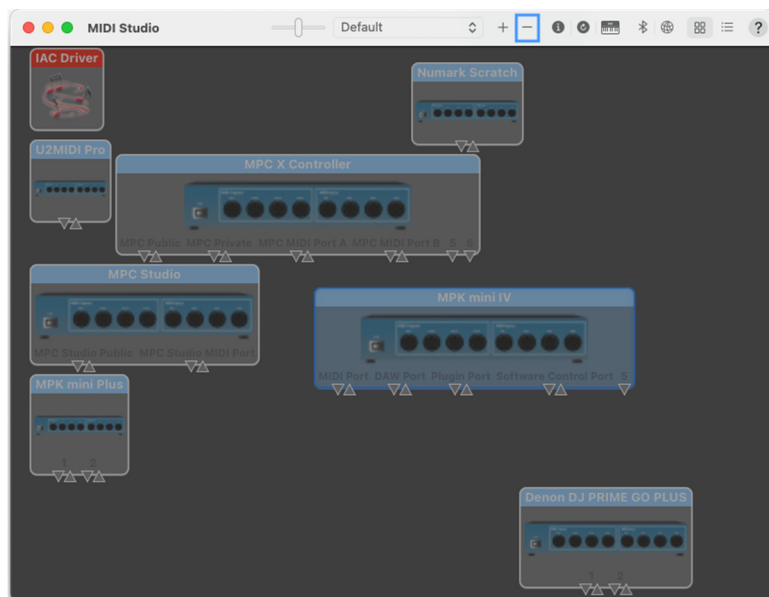


For macOS users, remove the MIDI device from Audio MIDI Setup and reconnect:

1. Close FL Studio if it is open.
2. Disconnect MPK[®] mini IV from your computer.
3. On your macOS computer, go to **Applications > Utilities > Audio MIDI Setup** and open it.
4. Enter the **MIDI Studio** tab by going to **Window > Show MIDI Studio**, or by pressing **⌘ (Cmd) + 2**.



5. Locate MPK® mini IV in the list of devices, and then remove by selecting it and pressing **backspace** on your keyboard, or by clicking the - icon in the MIDI Studio window.



6. Reconnect MPK® mini IV and reopen FL Studio.

Trademarks & Licenses

Akai Professional is a trademark of inMusic Brands, Inc., registered in the U.S. and other countries.

FL Studio is a registered trademark of Image Line NV.

macOS is a trademark of Apple Inc., registered in the U.S. and other countries.

Windows is a registered trademark of Microsoft Corporation in the U.S. and other countries.

All other product names, company names, trademarks, or trade names are those of their respective owners.

AKAI.PRO.COM