



MPK[®]mini^{IV}

Logic Pro
Setup Guide
English

Introduction

This guide will help you set up your MPK[®] mini IV to control Logic Pro software.

Important: Before you use MPK[®] mini IV for the first time, we recommend checking for available firmware updates. These updates add exciting new features and improvements, so staying up-to-date ensures the best experience with MPK[®] mini IV. Visit akaipro.com and go to the MPK[®] mini IV product page to check for available updates for download, then follow the instructions to update your device.

Support

To get started with MPK[®] mini IV, download your included software, and access the hardware *User Guide*, visit inmusic.to/mini4begin.

For additional product support, visit support.akaipro.com.

Setup

To begin, download and install the latest Logic Pro control script:

1. Close Logic Pro if it is running before beginning the installation.
2. Download the latest Logic Pro control script by going to inmusic.to/mini4begin.
3. Open the downloaded file and follow the instructions to complete the installation.

You can now open connect MPK[®] mini IV and open Logic Pro:

1. Use the included USB-C[®] cable to connect MPK[®] mini IV's **USB-C[®] Port** to an available USB 3.0 port on your computer (powered on).

Note: If connecting to a USB hub, make sure a powered hub is used.

2. Press the **PLUGIN/DAW** button on MPK[®] mini IV to ensure the DAW preset is selected (button is lit red).
3. Open Logic Pro.

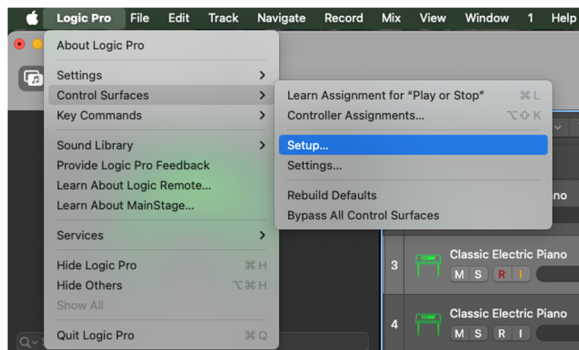
A dialog should appear asking if you would like to automatically assign controls to MPK[®] mini IV. Click **Auto Assign** to continue, and the DAW control script should automatically set up MPK[®] mini IV to work with Logic Pro.

If you have any issues, or if you missed the Auto Assign dialog and need to manually set up the control script, use the directions in the following [Control Surface Setup](#) section.

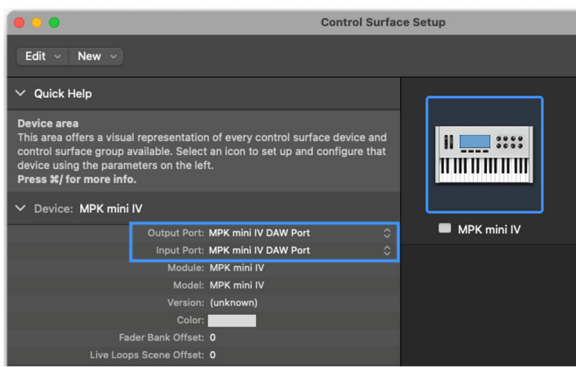
If you have any further issues, refer to the [Troubleshooting](#) chapter for more information.

Control Surface Setup

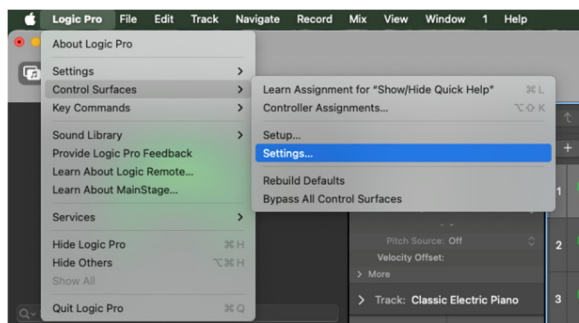
1. In Logic, open the **Logic Pro > Control Surfaces > Setup...** menu.



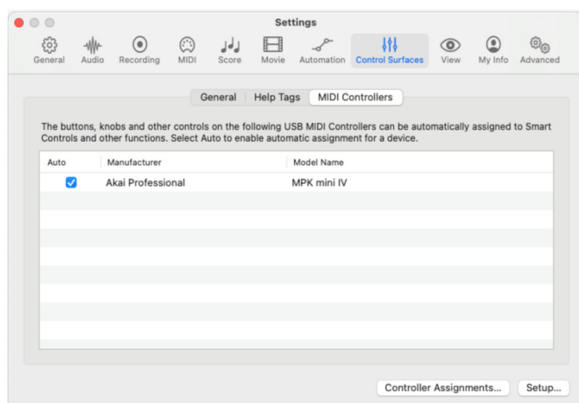
2. In the **Control Surface Setup** menu, select the MPK® mini IV and set the **Output Port** and **Input Port** to **MPK mini IV DAW Port**.



3. The Control Surface MIDI Controller should now be set automatically, but you can double-check this by opening the **Logic Pro > Control Surfaces > Settings...** menu.



4. Open the **MIDI Controllers** tab and ensure that **MPK mini IV** is checked.



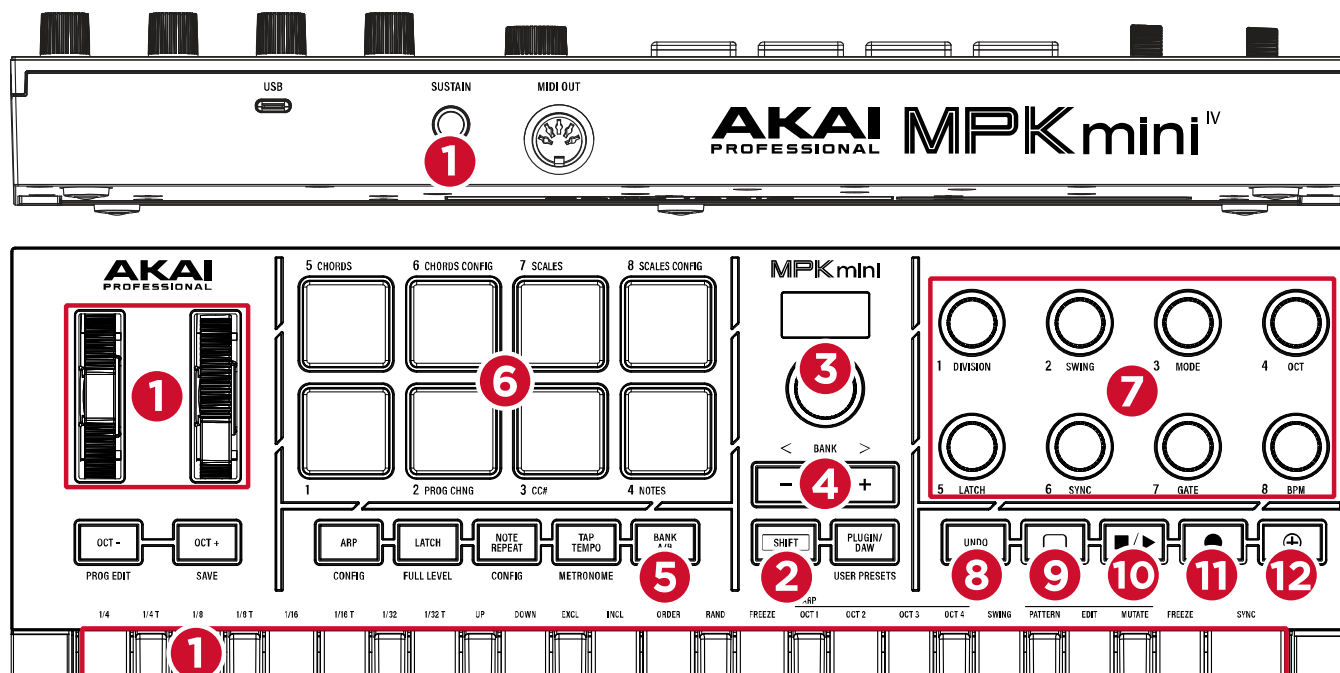
About MIDI Ports

MPK[®] mini IV features five different MIDI ports that are used for communication. Understanding what these ports are used for can help you set it up properly with your software or hardware.

Port #	Name	Description
1	MPK Mini IV MIDI Port	<p>This port will send keybed, drum pad, pitch and modwheel, sustain pedal, and knob control data.</p> <p>Messages sent to this port are expected to be recorded and edited by a Host DAW. Messages received from this port can be resent to the physical 5-pin MIDI output port, depending on the settings.</p> <p>All Presets will send MPK[®] mini IV performance data on this port by default.</p>
2	MPK Mini IV DAW Port	<p>This port will send all interface controls, screen controls, and transport controls to a connected supported DAW.</p> <p>When using the DAW Preset, this port must be enabled in the DAW software to access the DAW control script.</p>
3	MPK Mini IV Plugin Port	<p>This port will send all interface controls, screen controls, and transport controls to the Studio Instrument Collection (SIC) software.</p> <p>When using the Plugin Preset, this port must be enabled in the SIC software to access the SIC control script.</p>
4	MPK Mini IV Software Control Port	<p>This port will send all interface controls, screen controls, and transport controls for generic mapping.</p>
5	MPK Mini IV Din Port	<p>This port is the physical 5-pin MIDI output on the rear panel of MPK[®] mini IV.</p> <p>You can choose to send incoming MIDI data from the USB-C[®] port or the internal hardware MIDI data to this port by adjusting the DINsrc setting in the MPK[®] mini IV Global menu.</p>

Control Map

This chapter describes the functions of MPK® mini IV's compatible controls when using Logic.



1. Keyboard, Pitch Wheel, Modulation Wheel, Sustain Input: These basic performance controls are used for controlling and playing virtual instruments in Logic Pro. These controls send their data on MIDI Port 1 and are not part of the additional control script.

2. SHIFT: This button provides access to secondary functions when using MPK® mini IV with Logic Pro. Press and hold it and then press another button or pad to access its secondary function.

3. Encoder: Turn this knob to select tracks.

4. -/+: Press these buttons to move between banks of knob controls. See the following [Knob Modes](#) section to learn more.

Hold **SHIFT** and press these buttons to cycle between knob control modes in Logic Pro.

5. BANK A/B: Press this button to toggle between **Bank A** and **Bank B** for the pads, when available. See the following [Pad Modes](#) section to learn more about this function in each pad mode.

6. Pads: These drum pads can be used in four different modes, which can be accessed by holding **SHIFT** and pressing the following pads:

- **Pad 1:** Drum Mode
- **Pad 2 (PROG CHNG):** Track Record Mode
- **Pad 3 (CC#):** Track Solo/Mute Mode
- **Pad 4 (NOTES):** Live Loops Mode

See the following [Pad Modes](#) section to learn more about how each mode functions.

7. Knobs: These endless knobs can be used in six different modes, which you can cycle between by holding **SHIFT** and pressing the **-/+** buttons.

See the following [Knob Modes](#) section to learn more about how each mode functions.

8. UNDO: Press this button to undo the last action in Logic Pro.

REDO: Hold **SHIFT** and press this button to redo the last action undone in Logic Pro.

9. Loop: Press this button to turn cycle playback on and off in Logic Pro.

10. Stop/Play: Press this button to stop or start playback in Logic Pro.

Continue: Hold **SHIFT** and press this button to start playback from the last playhead position in Logic Pro.

11. Record: Press this button to enable arrangement recording in Logic Pro.

Quantize: Hold **SHIFT** and press this button to quantize the selected region, track, or notes in Logic Pro. This will snap events to the recording grid according to the current time division.

12. Overdub: Press this button to enable free tempo recording in Logic Pro.

Automation: Hold **SHIFT** and press this button to toggle read/latch automation in Logic Pro.

Pad Modes

The MPK® mini IV pads can be used in four different modes with Logic Pro. You can access each mode by holding **SHIFT** and pressing the following:

- **Pad 1: Drum Mode**

In this mode, the pads are mapped to a chromatic scale starting with C1. This will work with MIDI Instrument tracks and Drum Machine tracks. Press the **Bank A/B** button to switch to the second bank, which continues the scale.

- **Pad 2: Track Record**

In this mode, the top row of pads (Pads 5-8) controls the record enable state for the tracks in the current bank. The bottom row of pads (Pads 1-4) can be used to select tracks in the current bank.

- **Pad 3: Track Solo/Mute**

In this mode, the top row of pads (Pads 5-8) controls the Mute state for tracks in the current bank. The bottom row of pads (Pads 1-4) controls the Solo state for tracks in the current bank.

- **Pad 4: Live Loops**

In this mode, when **Pad Bank A** is selected the top row of pads (Pads 5-8) controls the recording and launching of clips for the current track. The bottom row of pads (Pads 1-4) controls scene launching for the current track.

When **Pad Bank B** is selected, the pads control scenes 1-8 for the current track.

Press the **Bank A/B** button to switch between banks.

Knob Modes

The MPK® mini IV knobs can be used in six different modes with Logic Pro. You can toggle between these modes by holding **SHIFT** and pressing the **-/+ buttons**.

- Smart Controls**

In this mode, the knobs are assigned to smart controls for the current track.

Press the **-/+ buttons** to switch between banks of smart controls 1-8 and 9-16.

- Volume and Pan**

In this mode, the top row of knobs controls the volume of tracks in the current bank, and the bottom row controls the panning of tracks in the current bank.

Press the **-/+ buttons** to bank through tracks in groups of four. The current bank will be highlighted in Logic Pro.

Track 1	Track 2	Track 3	Track 4
K1: Volume	K2: Volume	K3: Volume	K4: Volume
K5: Pan	K6: Pan	K7: Pan	K8: Pan

- Sends**

In this mode, the top row of knobs controls the odd numbered sends for tracks in the current track bank, and the bottom row controls the even numbered sends.

Turn the **encoder** to change tracks, which will also change the current track bank in focus. The current bank will be highlighted in Logic Pro.

Press the **-/+ buttons** to bank through send pages for tracks in the current bank.

Track 1	Track 2	Track 3	Track 4
K1: Send 1	K2: Send 1	K3: Send 1	K4: Send 1
K5: Send 2	K6: Send 2	K7: Send 2	K8: Send 2

- EQ**

When this mode is selected, Logic EQ is automatically added to the current track and the EQ window will open. The knobs control the following EQ functions.

Low Shelf	Mid Band 1	Mid Band 2	High Shelf
K1: Frequency	K2: Frequency	K3: Frequency	K4: Frequency
K5: Gain	K6: Gain	K7: Gain	K8: Gain

• Navigation

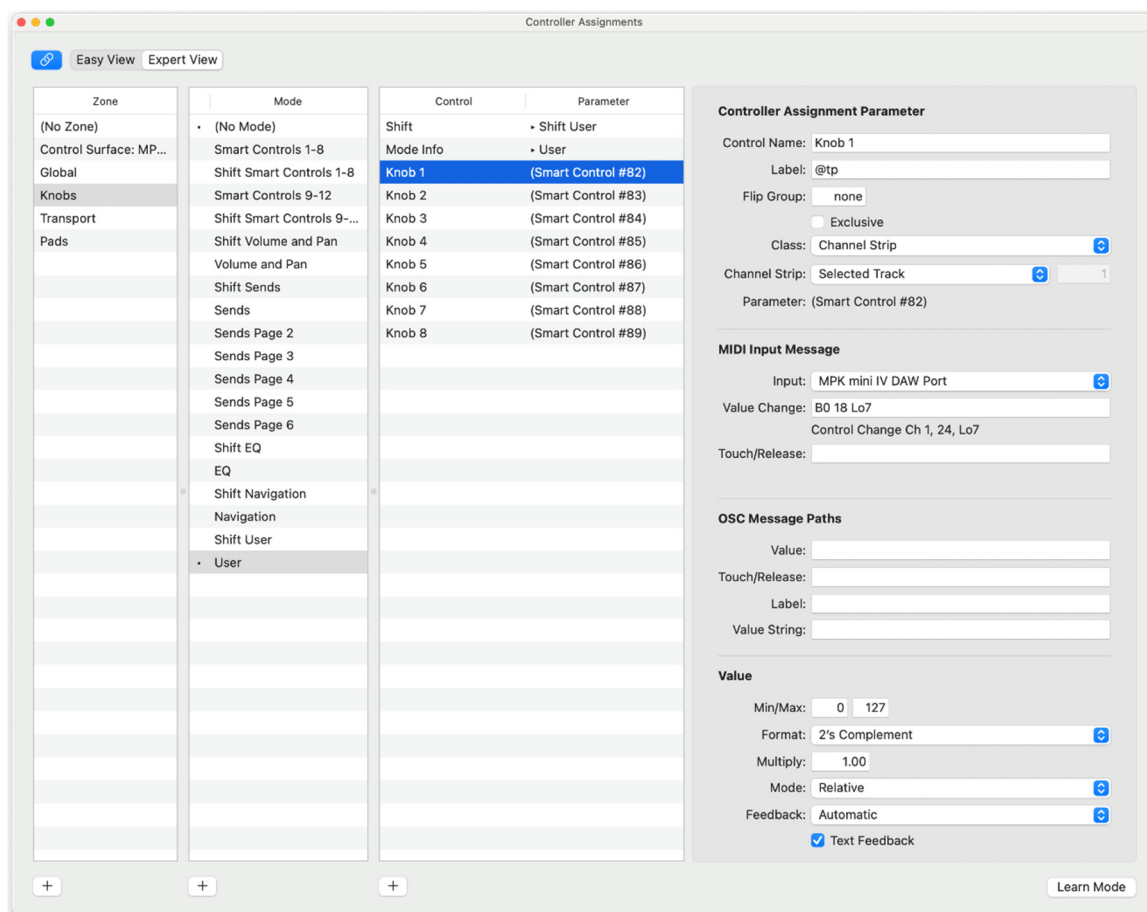
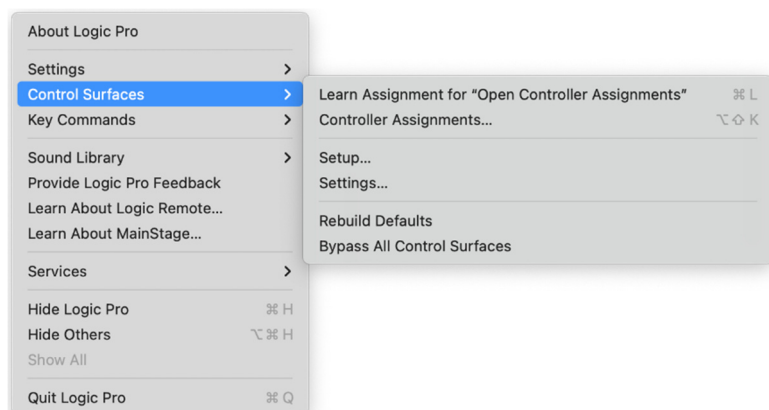
In this mode, the knobs control important navigation commands in Logic Pro.

K1: Scrub	K2: Horizontal Zoom	K3: Cycle Start	K4: Cycle End
K5: -	K6: -	K7: -	K8: Adjust Project BPM

• User Mode

In this mode, the knobs are unmapped, allowing you to make your own control assignments.

To create custom assignments, open the Controller Assignments page by going to **Logic Pro > Control Surfaces > Controller Assignments...**, or by pressing **OPTION + SHIFT + K**.



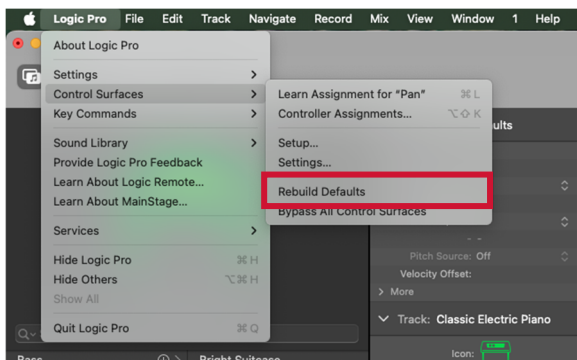
Troubleshooting

If you are experiencing trouble using the Logic Pro control script, you can try the following.

Check that DAW Control Mode is enabled on MPK[®] mini IV: Press the **PLUGIN/DAW** button on your MPK[®] mini IV so that it is lit red, indicating DAW mode is active.

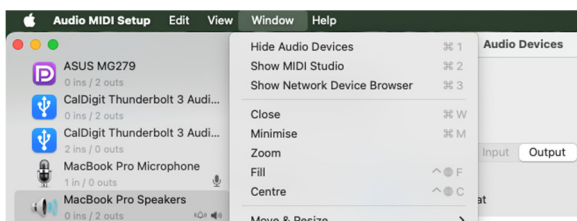
Rebuild Defaults in Logic Pro:

1. In Logic Pro, open the **Logic Pro > Control Surfaces > Rebuild Defaults** menu.
2. Follow the Control Surface Setup Guide to ensure your ports are set correctly.

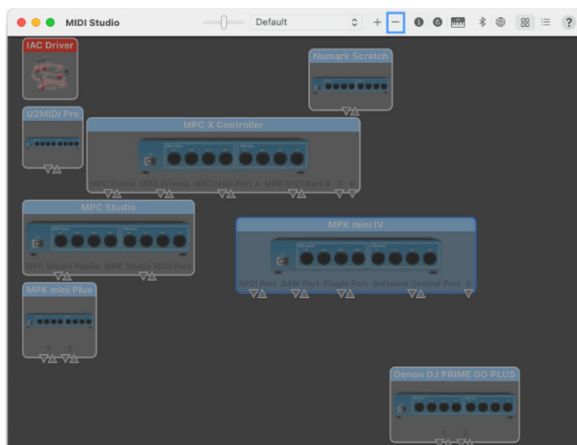


Remove the MIDI device from Audio MIDI Setup and reconnect:

1. Close Logic Pro if it is open.
2. Disconnect MPK[®] mini IV from your computer.
3. On your macOS computer, go to **Applications > Utilities > Audio MIDI Setup** and open it.
4. Enter the **MIDI Studio** tab by going to **Window > Show MIDI Studio**, or by pressing **⌘ (Cmd) + 2**.



5. Locate MPK[®] mini IV in the list of devices, and then remove by selecting it and pressing **backspace** on your keyboard, or by clicking the **-** icon in the MIDI Studio window.



6. Reconnect MPK[®] mini IV and reopen Logic Pro.

Trademarks & Licenses

Akai Professional is a trademark of inMusic Brands, Inc., registered in the U.S. and other countries.

Logic Pro and macOS are trademarks of Apple Inc., registered in the U.S. and other countries.

All other product names, company names, trademarks, or trade names are those of their respective owners.

AKAI.PRO.COM