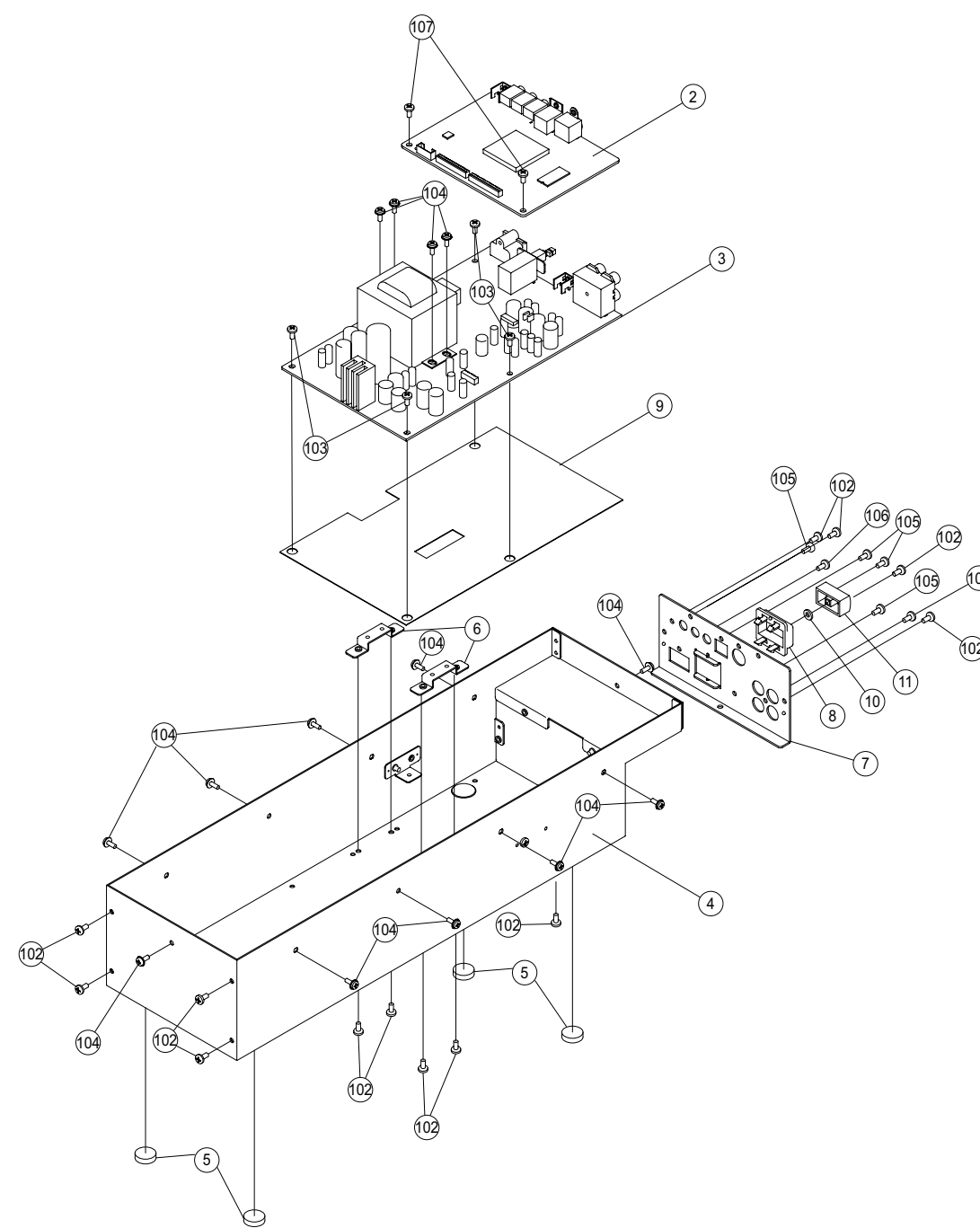
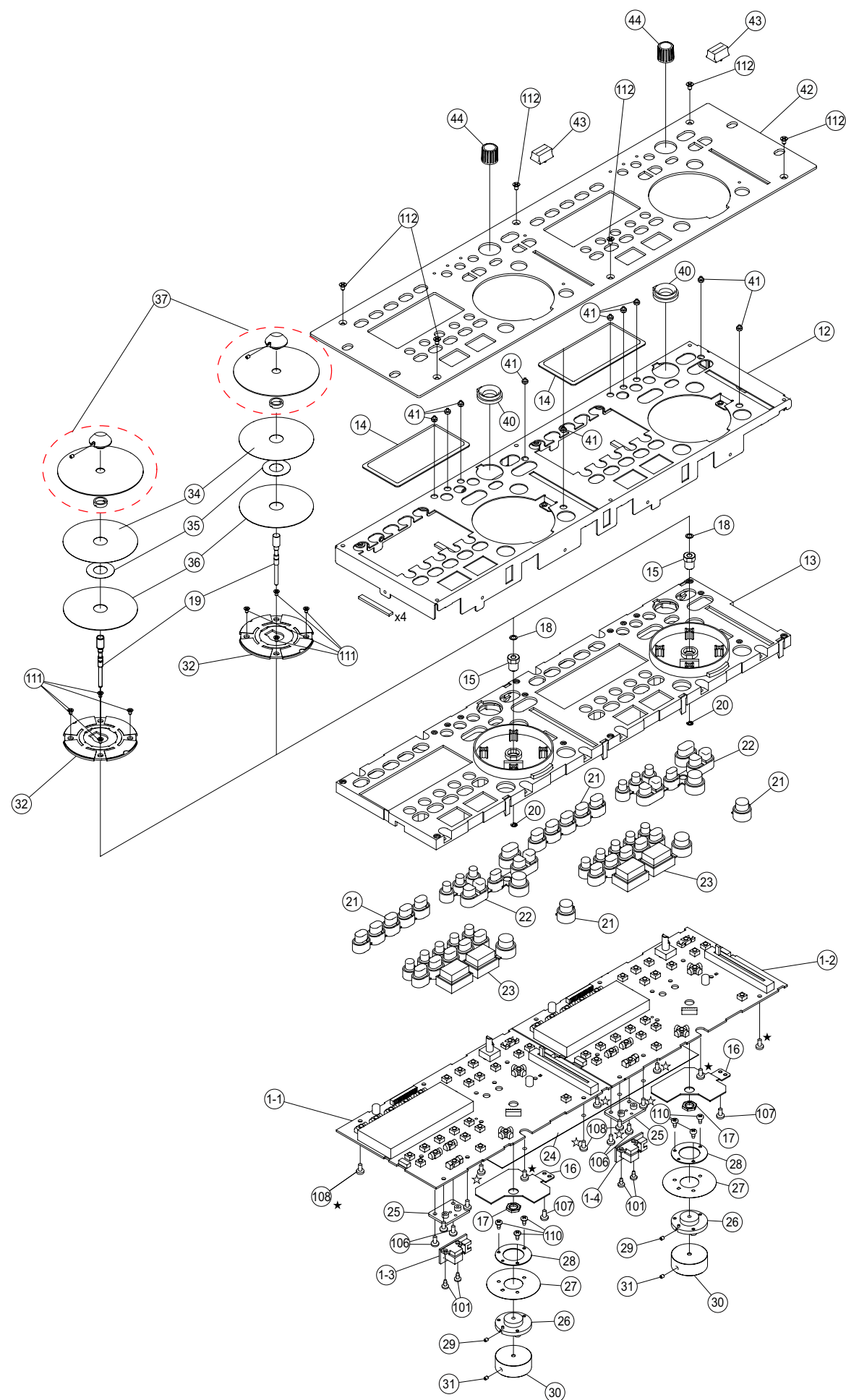




EXPLODED VIEW



WARNING:
 Parts marked with this symbol  have critical characteristics.
 Use **ONLY** replacement parts recommended by the manufacturer.

印の部分は安全を維持するために重要な部品です。従って交換時は必ず指定の部品を使用してください。

PARTS LIST OF EXPLODED VIEW

- * 本表に "nsp" と記載されている部品は供給できません。
- * Parts for which "nsp" is indicated on this table cannot be supplied.
- * 本表に "nsp" と記載されている基板 ASS'Y は供給できません。基板 ASS'Y の修理の際には基板部品表を確認のうえ、交換部品を発注してください。
- * P.W.B. ASS'Y for which "nsp" is indicated on this table cannot be supplied. When repairing the P.W.B. ASS'Y, check the board parts table and order replacement parts.
- * 本表に記載されている部品は、補修用部品のため製品に使用している部品とは一部、形状、寸法などが異なる場合があります。
- * The parts listed below are for maintenance only, might differ from the parts used in the unit in appearances or dimensions.

Note: The symbols in the column "Remarks" indicate the following destinations.
 E3 : U.S.A. & Canada model E2 : Europe model JP : Japan model

Ref. No.	Part No.	Part Name	Remarks	Q'ty	New
1	nsp	PANEL P.W.B. UNIT ASS'Y	GU-3848	1	*
1-1	-	PANEL 1 UNIT		1	*
1-2	-	PANEL 2 UNIT		1	*
1-3	-	SENSOR 1 UNIT		1	*
1-4	-	SENSOR 2 UNIT		1	*
★ 1-5	-	DISC 1 UNIT		1	*
★ 1-6	-	DISC 2 UNIT		1	*
2	00D GU-33849	MAIN UNIT P.W.B. UNIT ASS'Y		1	*
3	nsp	POWER P.W.B. UNIT ASS'Y	GU-3850E2:for E2	1	*
3	nsp	POWER P.W.B. UNIT ASS'Y	GU-3850E3:for E3	1	*
3	nsp	POWER P.W.B. UNIT ASS'Y	GU-3850:for JP	1	*
4	00D 105 1697 005	CASE ASSY		1	*
5	nsp	FOOT SHEET		4	
6	nsp	TRANS BRACKET		2	*
7	00D 105 1699 100	REAR PANEL		1	*
8	00D 146 2433 007	P.SW KNOB GUIDE		1	
9	nsp	INSULATOR		1	*
10	nsp	SPACER		1	*
11	00D 113 1689 001	P.SW KNOB		1	
12	nsp	MAIN BRACKET		1	*
13	nsp	INNER PANEL ASSY		1	*
14	00D 143 1303 100	WINDOW		2	*
15	00D 443 1627 003	BEARING		2	*
16	nsp	GND BRACKET		2	*
17	ORD 477 0330 103	8 N-Z		2	
18	ORD 475 1161 016	WASHER		2	
19	00D 422 0687 005	SHAFT		2	*
20	ORD 476 1003 009	3 E RING		2	
21	00D 113 2123 003	RUBBER BUTTON 1		2	*
22	00D 113 2124 002	RUBBER BUTTON 2		2	*
23	00D 113 2125 001	RUBBER BUTTON 3		2	*
24	nsp	PROTECT SHEET		1	*
25	00D 441 2014 004	T.SENSOR BASE		2	
26	00D 421 0838 013	WHEEL ASSY (2)		2	
27	00D 421 0836 002	SCALE DISC		2	
28	00D 441 2025 006	WHEEL BRACKET		2	*
29	ORD 474 4310 007	2X2.5 BSS		2	
30	00D 421 0860 007	JOG WEIGHT ASSY		2	*
31	ORD 474 4300 017	2.6X3 BSS		2	
32	00D SPK 580	TOUCH SENSOR UNIT		1	*
34	00D 421 0849 028	SLIP MAT(B)		4	
35	00D 421 0849 057	SLIP MAT		2	
36	00D 421 0849 031	SLIP MAT		2	
37	00D GEN 8652	JOG DISC UNIT		2	*
40	00D 143 1302 004	LENS 2		2	*
41	00D 143 1268 203	LENS 2		10	
42	00D 144 3034 108	TOP PANEL		1	*

Ref. No.	Part No.	Part Name	Remarks	Q'ty	New
43	00D 113 2078 103	SLIDE KNOB		2	
44	00D 112 1024 100	KNOB		2	*
★ 45	00D 009 0290 037	11P FFC(1.0) L=60		3	
★ 46	00D 009 0290 053	27P FFC(1.0) L=400		1	*
★ 47	00D 009 0290 040	27P FFC(1.0) L=200		1	*
★ 48	00D 009 0290 011	20P FFC(1.0) L=170		2	*
★ 49	ORD 445 0048 003	CORD HOLDER (L76)		3	
★ 50	nsp	R. SHEET E2 SUB ASSY	for E2	1	*
★ 51	nsp	R. SHEET E3 SUB ASSY	for E3	1	*
★ 52	nsp	R. SHEET J SUB ASSY	for JP	1	*
★ 53	nsp	C-UL MARK US	for E3	1	
★ 54	nsp	FCC/CLASS B CAUTION	for E3	1	
SCREWS AND WASHERS					
101	ORD 473 7505 010	2.6X6 CBTS (P)-Z		4	
102	ORD 473 7002 034	3X6 CBTS (S)-B		15	
103	ORD 471 3303 016	3X6 CBS-Z		4	
104	ORD 473 8007 083	3X8 CUP SCREW		14	
105	ORD 471 3303 029	3X6 CBS-B		4	
106	ORD 473 7508 017	3X10 CBTS (P)-B		6	
107	ORD 473 7002 005	3X6 CBTS(S)-Z		4	
108	ORD 473 7002 018	3X8 CBTS (S)-Z		10	
109	ORD 473 7500 015	3X8 CBTS (P)-Z		16	
110	ORD 473 7506 019	2X6 CBTS (P)-Z		6	
111	ORD 473 7520 008	2.6X6 CFTS(P)-B		8	
112	ORD 471 2801 030	3X5 CFS-B		6	