

# **IMPORTANT - PLEASE READ**

## **Terms and Conditions of End-User License Agreement**

The software upgrade program for Denon CD/MP3 models provided herewith (the "Software") is proprietary to D&M PROFESSIONAL, a division of D&M Holdings US Inc. ("D&M PRO") and has been made available to you only in accordance with and subject to the terms and conditions of this License Agreement. By installing or using the Software, you will be confirming your acceptance of the Software and your agreement to be bound by all of the following terms and conditions, including, without limitation, the disclaimers which are a part hereof: **IF YOU DO NOT AGREE TO THE FOLLOWING TERMS AND CONDITIONS DO NOT INSTALL OR USE THE SOFTWARE.**

1. **Title.**

The Software is the property of D&M PRO. No title or ownership therein or thereto is transferred to you hereunder. This License only provides you with certain prescribed rights to use the Software, subject always to the terms and conditions herein set forth. All rights in and to the Software are reserved by D&M PRO.

2. **Limited Rights of Use.**

This License only allows you to use the Software for your own internal purposes and solely in connection with a Denon CD/MP3 player that you personally own (the "Product"). The Software is licensed not sold. All rights not specifically granted to you hereunder are retained exclusively by D&M PRO.

3. **Non-Disclosure.**

You acknowledge that the Software is proprietary to and a trade secret of D&M PRO, and you agree not to make or distribute copies of the Software or to transfer the Software electronically or otherwise to any other person. The Software is protected by copyright laws and international copyright treaties, as well as other intellectual property laws and treaties. Without limiting the generality of the foregoing, you also agree:

- (a) Not to transfer the Software from one computer to another or over a network.
- (b) Not to decompile, reverse engineer, disassemble or modify the Software in any way or for any purpose.
- (c) Not to resell, rent or otherwise transfer the Software to any other person.
- (d) Not to create or distribute any derivative works based upon the Software or any part thereof.
- (e) Not to use the Software in any other machine other than the model intended.

4. **Limited Warranty.**

The Software has been provided to you free of charge and "AS IS" with all faults; provided, that, D&M PRO's Limited Warranty shall continue to apply with respect to the Product after installation of the Software, subject to all of the terms and conditions of such Limited Warranty, including its duration based on the original date of purchase of the Product. **D&M PRO makes no other warranty of any kind, express or implied, including, without limitation, any implied warranty of merchantability or fitness for particular purpose, non-infringement or otherwise with respect to the Software or the Product.** Without limiting the generality of the foregoing:

- (a) D&M PRO assumes no responsibility for and shall have no liability of any kind with respect to any problems encountered in conjunction with or arising out of the downloading of the Software, including, without limitation, problems resulting from any interruption that may have occurred while downloading the Software.
- (b) Neither D&M PRO nor any of its distributor's suppliers or other vendors shall be required to provide you with any technical support or services of any kind relating to the Software.

5. **No Consequential Damages.**

Except as may be prohibited by law, Neither D&M PRO nor any of its distributors shall be liable for any indirect, special, incidental or consequential damages or losses of any kind incurred or arising out of or in connection with your downloading or use of the Software.

6. **Hold Harmless and Limit of Liability.**

You agree to release and hold harmless D&M PRO and its distributors of and from any and all claims, demands, suits, proceedings, losses, damages, liabilities, costs and expenses (including attorneys' fees and disbursements) of any kind arising out of or relating to the Software or its use. **EXCEPT AS MAY BE PROHIBITED BY LAW, IN NO EVENT WILL D&M PRO OR ITS SUPPLIERS BE LIABLE TO YOU FOR ANY AMOUNT ABOVE FIFTY DOLLARS (\$50.00).**

7. **Governing Law.**

The terms and conditions of this License Agreement shall be governed by and construed in accordance with the law of the State of New York. Any claims, actions or proceedings relating to this License Agreement or the enforcement hereof shall be brought in the courts of the State of New York or Federal courts located in New York, NY, and you waive any objection to the jurisdiction of such courts.

8. **Entire Agreement.**

The terms and conditions herein set forth constitute the entire agreement between you and D&M PRO with respect to the subject matter hereof, and all agreements, commitments, undertakings, understandings or statements of any kind previously made by D&M PRO or any of its distributors with respect to the subject matter hereof are merged herein and superseded by this License Agreement. No amendment or modification of the terms of this License Agreement shall be effective or binding on D&M PRO unless it is made in writing and executed or published by D&M PRO. References to "D&M PRO" herein include D&M Holdings US Inc. its subsidiaries and affiliates.



# DN-S3500 Plug In Procedure

Please read these instructions several times before performing the actual procedure.

## Step 1: CD-R/RW Creation

1. You should have already downloaded files to a folder of your choice at this point.  
*Example: (C:\S3500 or Desktop)*
2. Launch your disc burning software in your computer. (Roxio, Nero..etc)
3. Within your software options, select to make a **DATA disc**. (*Not Audio!*)
4. Go to the properties of your burner software and find the **ISO9660** format setting. Refer to our "Software Burning Guide" on page 6 & 7 or contact your software provider *if* you cannot find it.  
(*You must find and select **ISO9660** or the procedure will fail*)  
You can also view this help video: <http://www.denondj.com/videos/SoftwareBurningGuideVideo.wmv>  
(**Note:** Model numbers used in the video may differ from yours and are used for examples only)
5. Go to the properties of your burner software and find the **MODE/LEVEL** setting. In most cases, they are referred to as, **MODE 1/LEVEL 1 CD-ROM**. Refer to our "Software Burning Guide" on page 6 & 7 or contact your software provider *if* you cannot find it.  
(*You must find and select **MODE 1/LEVEL 1 CD-ROM** or the procedure will fail*)



**Note:** If you are using Windows XP "drag and drop" to burn your disc, the procedure will fail. Windows XP does not give you the option to select, **ISO9660** or **MODE/LEVEL 1**.  
\*You must use third party software such as, Roxio/Easy Creator, Nero...etc.

6. Locate the **.bin** file (N3099a26.bin) from where you initially saved it on your PC.
7. Select and add the (1) **.bin** file into your burners software project window.



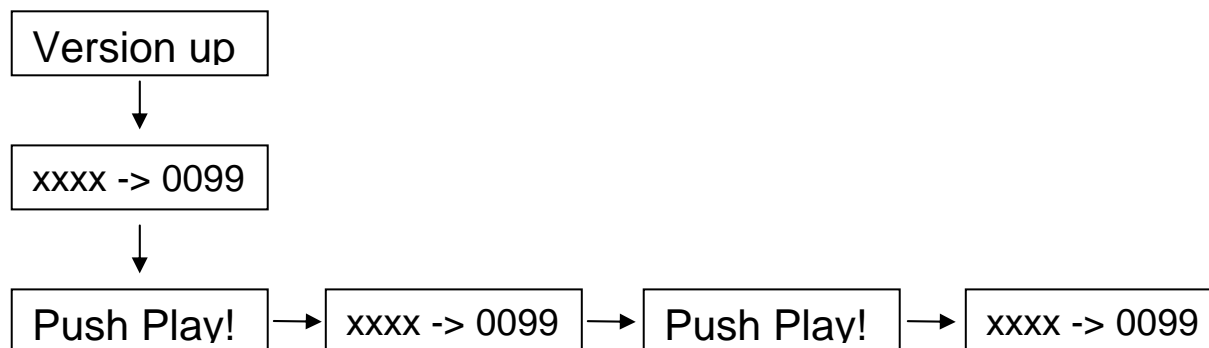
The **.bin** file (listed above) should be the **ONLY** selected file to be recorded.  
Please verify before continuing to # 8.

8. Finalize the CD-R/RW at the **slowest** possible recording speed.  
(*You must finalize/close the disc or the procedure will fail*)  
If you're not sure of what you are doing, please use a blank CD-RW disc so you can erase it and start over.
9. Take the finalized disc over to the DN-S3500 and go to Step 2.



## Step 2: Uploading the System Software

1. Turn the power **ON** for the DN-S3500 and remove disc (if any)
2. Take the *DATA* disc you've just made, load it into the **Slot-In Drive**.
3. Once the disc has been identified, the following will be displayed:



**Note:**

\*If you see "**disc error**" in the display, chances are the *DATA* disc was not burned properly as described in Step 1.

\*See pages 6 & 7 for additional help or you can view this video here:

<http://www.denondj.com/videos/SoftwareBurningGuideVideo.wmv>

(Note: Model numbers used in the video may differ from yours and are used for examples only)

4. Push the **PLAY** button  
*\*The display will proceed to say "NowLoading"*



**Warning:**

\*Do not turn the power off during this "**NowLoading**" wait period or else your machine will become inoperable and require factory service.

5. The disc will automatically Eject when completed
6. Remove the *DATA* disc from the drive.
7. Shut the power **OFF**, then back **ON** to reset the system
8. Verify your software by pressing the -PRESET button for more than 1 sec. In the PRESET mode turn the track knob counter clockwise until you see "**Sys 0099**".

# DN-S3500 PLUG IN'S OPERATING INSTRUCTIONS



## New & Current Plug In's as of Nov 2006 (Sys 0099)

- Improved some issues found with Sys 0098
  - BPM not reading properly, CDDA
  - Some MP3 files skip, by certain operation
  - Sometimes unit goes into Reverse playback when cycling through the "Platter Source" button
  - Cue Stutter improved for "other mode" under hard and fast conditions
  - All Previous Plug Ins listed below are also included with this version

## Previous Plug In's as of Oct 2006 (Sys 0098)

- Improved the Cue area for instantaneous scratching from Play
  - In Single playback mode
    - 2-spinbacks of audio silence was purposely added prior to the beginning of track/file.
    - This will now enable you to catch the first downbeat and maintain your marker start point for those who wish to scratch around the very beginning of the track/file (CD & MP3) \*Also available for MP3 in Cont. mode
  - In Cont. playback mode
    - 2-seconds of pre-data information loads into memory prior to the beginning of CD audio track.
    - This will now enable you to instantly backspin up to 2 sec. into the previous track (excluding Tr1) for those who wish to scratch around the very beginning of the audio track. \*Not available for MP3
  - Setting a new Cue point
    - 2-seconds of pre-data information loads into memory prior to your new Cue point made inside the track/file.
    - This will now enable you to instantly backspin up to 2 sec. and catch the first beat for those who wish to scratch around the Cue point made inside the track/file. (CD & MP3)
- Improved performance with Serato Scratch Live™ control discs
  - A new preset was added to the preset menu called, "Audio Curve ON/OFF"
  - This function is intended to be used only with Serato™ Scratch Live control discs.
  - For more information about Serato™, products please visit their website [www.scratchlive.net](http://www.scratchlive.net)
  - When using normal audio and mp3 discs, always set this preset to "Audio Curve to ON"
  - When using Serato™ Scratch Live control discs it's recommended to set "Audio Curve to OFF" for optimum compatibility. (Please refer to the owner's manual on how to enter, change and exit the preset function)
- Improved pitch stepping increments for the 4/10% pitch range
  - No instructions required, software improvement
- Added the ability to reset the Effects (Filter/Flanger/Echo-Loop) back to factory default
  - When all the Effects are in the OFF status, press and hold down the Dry/Wet knob for 2 seconds.
  - The display will give you a visual confirmation of: "EFX Reset" when completed
- Added more Fader Start preset options for advanced control
  - Two more Fader Start options were added to the preset menu called, "2L P/Pas & 1L P/Cue", but we will explain all four of them below. The DN-S3500 Fader Start function can be used in various ways. The most traditional method is Play/Cue, which starts and recue's your track based on fader movement. We have added a new method called, Play/Pause, which starts from your cue point and pauses playback based on fader movement. Play/Pause adds new performance tricks when used in conjunction with, Brake, Dump, Reverse and Echo by way of a matrix type mixer that Denon DJ offers. (Please refer to the owner's manual on how to enter, change and exit the preset function)
  - 2L P/Cue – Traditional Fader Start system of "Play/Cue" using a 3.5mm stereo male to male cable and compatible mixer, such as any Denon mixer
  - 2L P/Pas – Traditional & Unique Fader Start system of "Play/Pause" using a 3.5mm stereo male to male cable and compatible mixer, such as any Denon matrix mixer
  - 1L P/Cue – Non Traditional Fader Start function of "Play/Cue" using a 3.5mm mono male to male cable and older compatible mixer
  - 1L P/Pas – Non Traditional Fader Start function of "Play/Pause" using a 3.5mm mono male to male cable and older compatible mixer
  - (Please refer to the owner's manual on how to enter, change and exit the preset function)

- **Added “TT Tricks” function**  
*-A new preset was added to the preset menu called, “TT Tricks ON/OFF”  
This new function will allow you to touch the spinning platter during the “Brake Effect” slope without resuming back to Play mode. To use this function as just described, enter the preset mode and set “TT Tricks to “ON”. When “TT Tricks” in set to OFF, the platter will auto restart when touched during the Brake Effect.  
(Please refer to the owner’s manual on how to enter, change and exit the preset function)*
- **Added “Brake Memory” function**  
*-When the Brake Time is adjusted, it will now automatically remember and save your last setting even when the power is turned off.*
- **Resolved minor & infrequent software issue**  
*- Sometimes when scratching at a particular point, playback will return to the Cue status.*

### Previous Plug In’s as of January 2006 (SYS 0095)

- **Resolved an infrequent loop back to Cue issue also causing the time display to freeze**  
*-No instructions required, software improvement*
- **Resolved going into PLAY mode from heavy Cue Stutter operation**  
*-No instructions required, software improvement*
- **Resolved time display issue during simultaneous scratch and pitch slider operation**  
*-No instructions required, software improvement*
- **Added the ability to turn on/off the Effects while scratching**  
*-No instructions required, software improvement*
- **Added the ability to use Brake/Dump/Rvs effects while recording a sample**  
*-No instructions required, software improvement*
- **Added the ability to automatically copy the disc pitch and key information during disc sampling or Seamless Loop to Sampler Copy**  
*-No instructions required, software improvement  
(Please refer to the owner’s manual for full use of the sampler function)*

➤ *Please visit our website [www.denondj.com](http://www.denondj.com) for the latest free Plug Ins...*

# How to properly burn DENON's Plug-In Software to a CD-R/RW

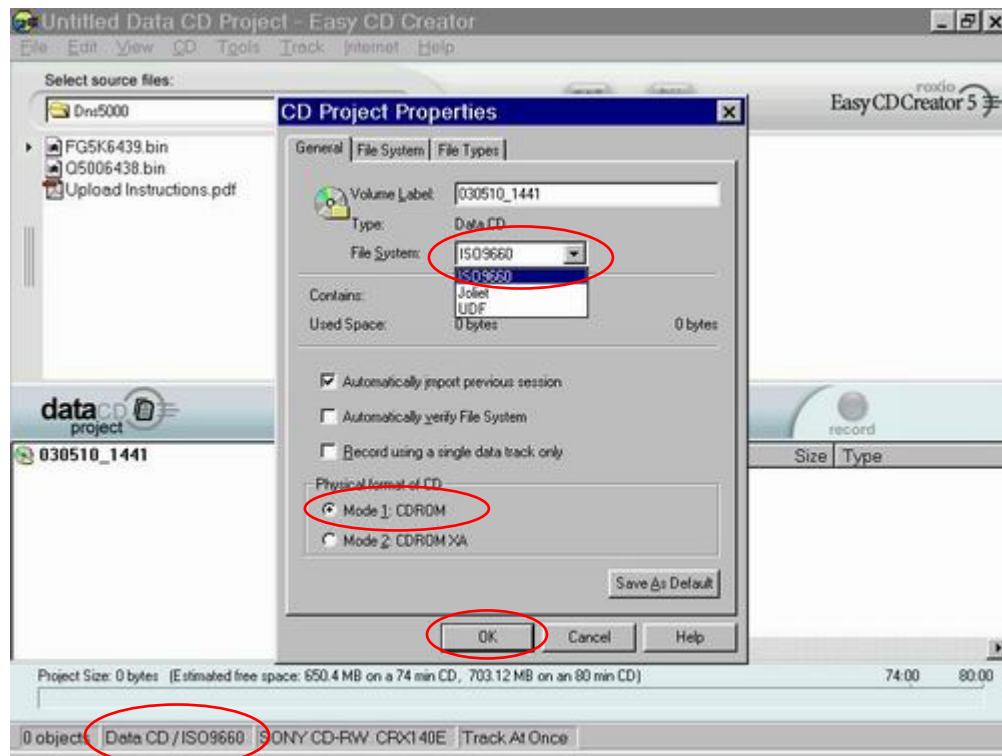
If you are experiencing problems with your upload, chances are you did not select the proper settings within your burning software. The below screen shots are of the two most popular brands that will guide you with these important settings. You can also view this video for help:

<http://www.denondj.com/videos/SoftwareBurningGuideVideo.wmv>

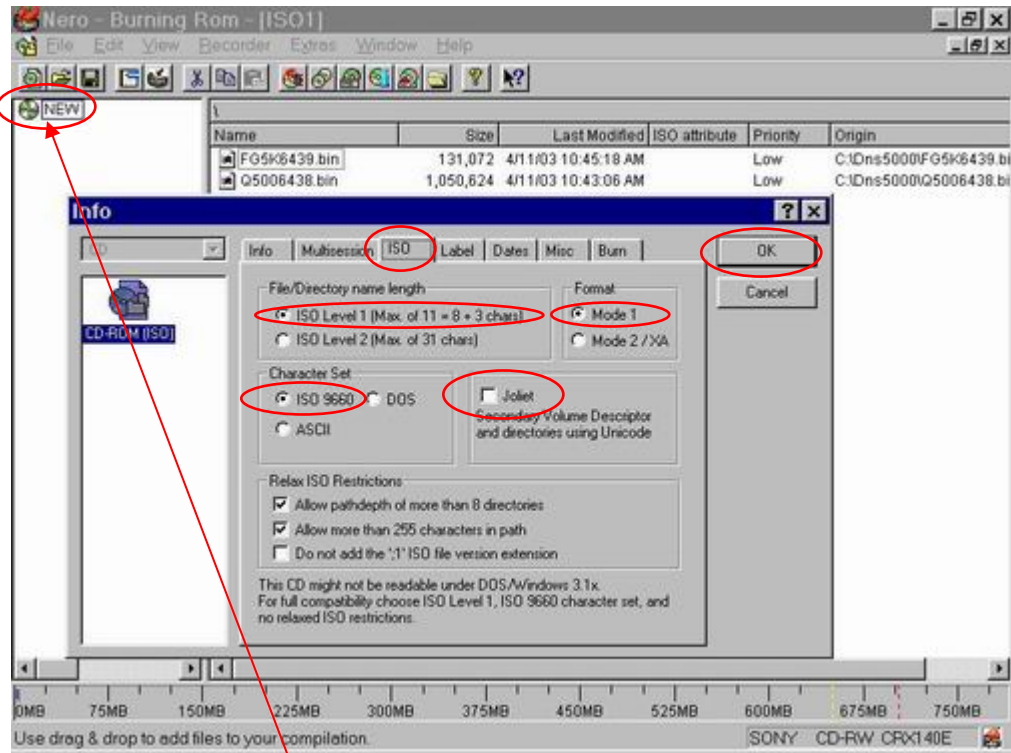
(Note: Model numbers used in the video may differ from yours and are used for examples only)

## Valid for all Denon DJ CD/MP3 Player Models

### Roxio – Easy Creator 5 (Select “Classic” for versions above 6)



1. Double click on this setting to change your CD properties.
2. Select “ISO9660” circled in red
3. Select “Mode 1” circled in red
4. Select “OK” circled in red
5. Select the (1) required “.bin” file, then finalize at the slowest possible speed.
6. Read the step-by-step instructions included on page 2 & 3.



1. Right click on the “NEW” icon and select “Properties” in the drop down menu to change your CD properties. The Info box will then appear.
2. Select the “ISO” tab circled in red
3. Select “ISO Level 1” File/Directory name length circled in red
4. Select “Mode 1” Format circled in red
5. Select “ISO 9660” Character Set circled in red
6. Uncheck the “Joliet” box circled in red
7. Select “OK” circled in red
8. Select the (1) required “.bin” file, then finalize at the slowest possible speed
9. Read the step-by-step instructions included on page 2 & 3.