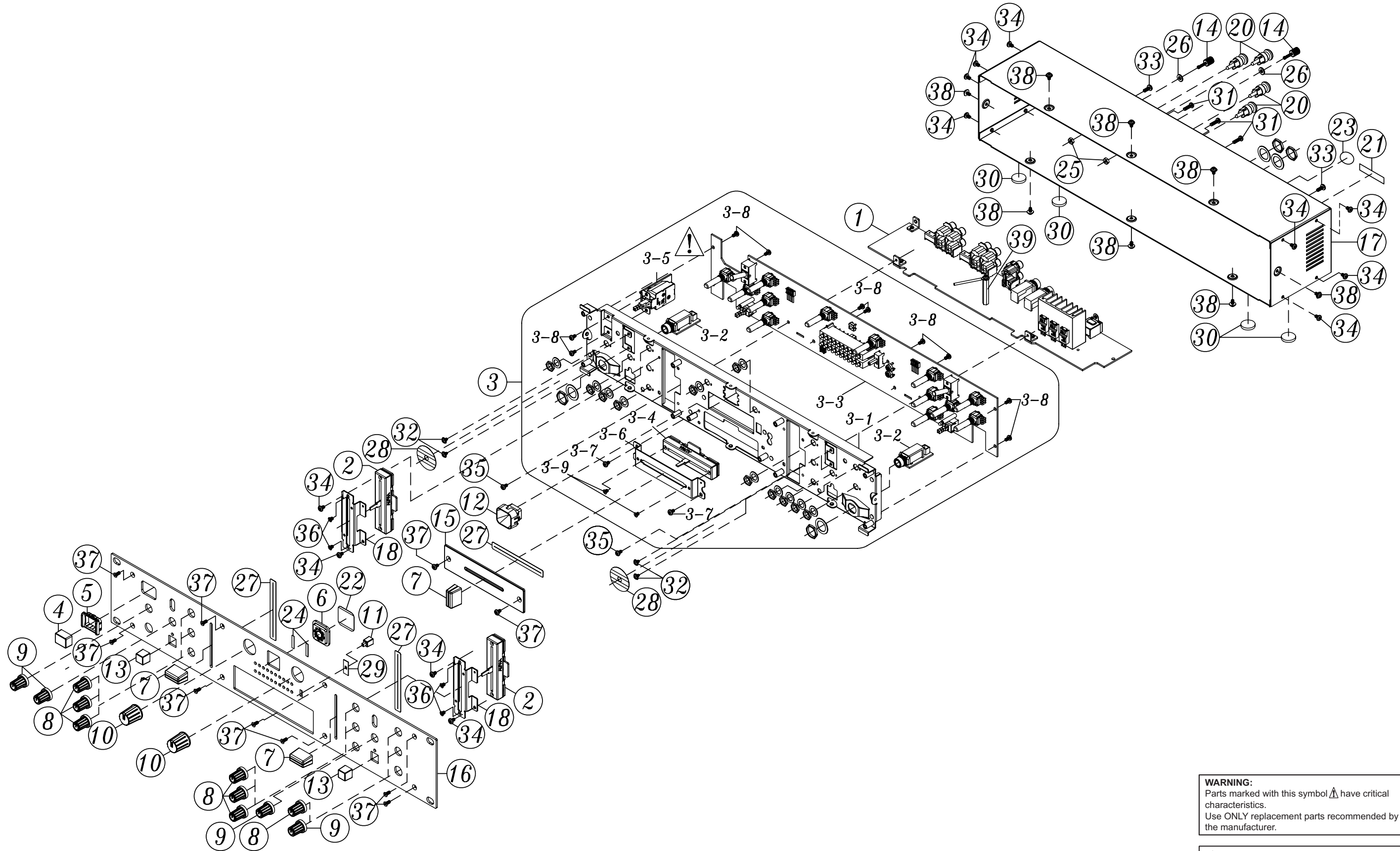




EXPLODED VIEW



WARNING:
 Parts marked with this symbol  have critical characteristics.
 Use ONLY replacement parts recommended by the manufacturer.

印の部分は安全を維持するために重要な部品です。従って交換時は必ず指定の部品を使用してください。

PARTS LIST OF EXPLODED VIEW

* 本表に "nsp" と記載されている部品は供給できません。

* Parts for which "nsp" is indicated on this table cannot be supplied.

* 本表に "nsp" と記載されている基板 ASS'Y は供給できません。基板 ASS'Y の修理の際には基板部品表を確認のうえ、交換部品を発注してください。

* P.W.B. ASS'Y for which "nsp" is indicated on this table cannot be supplied. When repairing the P.W.B. ASS'Y, check the board parts table and order replacement parts.

* 本表に記載されている部品は、補修用部品のため製品に使用している部品とは一部、形状、寸法などが異なる場合があります。

* The parts listed below are for maintenance only, might differ from the parts used in the unit in appearances or dimensions.

Note: The symbols in the column "Remarks" indicate the following destinations.

E3: U.S.A. & Canada model

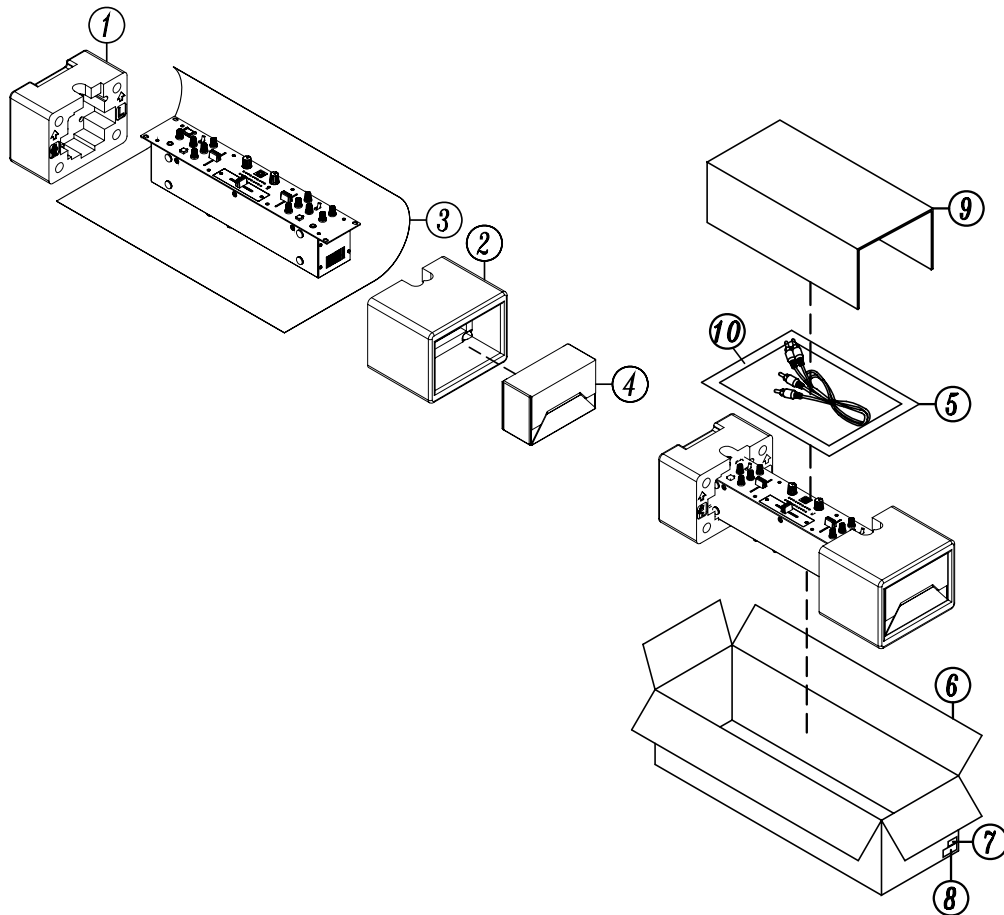
E2: Europe model

E2A : Asia model

E2C: China model

Ref. No.	Part No.	Part Name	Remarks	Q'ty	New
1	nsp	IO P.W.B. ASS'Y		704-X050-7208	1 *
2	nsp	CH FADER P.W.B. ASS'Y		704-X050-7210	2 *
3	nsp	FRONT BOARD & MIXER & FADER ASS'Y		704-X050-7213	1 *
3-1	nsp	FRONT BOARD ASS'Y		703-050-1113	1 *
3-2	nsp	PHONE P.W.B. ASS'Y		704-FX19-4398	2 *
3-3	nsp	MIXER P.W.B. ASS'Y		704-X050-7209	1 *
3-4	00D 941 0057 204	CROSS FADER P.W.B. ASS'Y		704-X050-7211	1 *
3-5	nsp	POWER SW P.W.B. ASS'Y		704-X050-7212	1 *
3-6	00D 958 7047 202	CS TYPE FIXED PLATE		300-900-1248	1
3-7	00D 958 7039 100	SCREW(BTB,Φ3*L5)		602-QMX2BPM-322	2
3-8	00D 958 7038 907	SCREW(ISO P,M3*5L*P0.5)		602-MP3-324	10
3-9	00D 958 7039 207	SCREW(ISO F,Φ3*L4*P0.5)		602-SA12-414	2
4	00D 941 0057 301	POWER KNOB		100-HDJ2000-1641	1 *
5	nsp	KNOB PROTECTOR		100-HDJ2000-1642	1 *
6	00D 958 7013 207	MARK WINDOW(PMMA,23.7*23.7*4.2t)		100-300-2229	1
7	00D 958 7013 401	PUSH KNOB		100-300-2231	3
8	00D 958 7045 709	ROTARY KNOB(PP WHITE,TPR BLACK)		100-900-2298	7
9	00D 941 0057 408	ROTARY KNOB(PP ORANGE,TPR BLACK)		100-900A-2298	4
10	00D 958 7046 203	LARGE ROTARY KNOB(ABS)		100-900-2303	2
11	00D 958 7046 407	SQUARE PUSH KNOB		100-900-2305	1
12	00D 941 0057 505	TRANSPARENT MEDIA ADAPTER		100-050-2514	1 *
13	00D 941 0057 602	PUSH KNOB		100-050-2516	2 *
14	00D 958 7013 605	GROUND PIN		200-DJ100-231	2
15	00D 941 0057 709	VR BOARD(IRON,2t)		300-050-695	1 *
16	00D 941 0057 806	FRONT PANEL		300-050-1529	1 *
17	nsp	BOTTOM BASE	for E2A	300-050A-1531	1 *
17	nsp	BOTTOM BASE	for E2C	300-050C-1531	1 *
17	nsp	BOTTOM BASE	for E2/E3	300-050E2-1531	1 *
18	nsp	CH FIXED PLATE		300-050-1532	2 *
20	00D 958 7037 500	RCA ADAPTOR PLUG(A028)		420-Q3433-106	4
21	00D 941 0025 401	LABEL(BARE,36*8mm,t=1.2mm)		501-DV300-1067	1
22	00D 958 7038 004	SPREAD BOARD(75PBA,68.7*7.7*0.3t)		501-300-1782	1
23	nsp	3C LABEL(15*11.8mm)		501-050E2C-2045	1 *
24	00D 958 7038 509	REVERSIBLE PASTE(3mm)		508-RCC1055-071	2
25	00D 941 0055 109	NUT(M3*P0.5)		601-A100-004	2
26	00D 941 0019 608	WASHER(Φ8*3.2*1t,NI)		606-Q2221-122	2
27	00D 941 0058 009	VR CUSHION(75.5*8.5*0.3t)		612-HDJ7000-056A	3 *
28	00D 958 7039 809	CUSHION(Φ28*4.8*0.5t)		612-Q2422-102	2
29	00D 958 7063 707	CUSHION(17*7*0.5t,BLACK)		612-900-219	1
30	00D 941 0058 106	FOOT MAT		612-050-275	4 *
39	nsp	SPACER SUPPORT		504-X050-221	1 *
SCREWS					
31	00D 958 7063 406	SCREW(PTP,M3*10)		602-MK7-131	3
32	00D 958 0001 902	SCREW(WJMP,Φ2.6*L4*P0.45)		602-MK7-134	4
33	00D 958 7063 309	SCREW(ISO B,Φ3*L8*P0.5)		602-HP1010K-178	2
34	00D 958 7039 100	SCREW(BTB,Φ3*L5)		602-QMX2BPM-322	12
35	00D 958 7038 907	SCREW(ISO P,M3*5L*P0.5)		602-MP3-324	2
36	00D 958 7039 207	SCREW(ISO F,Φ3*L4*P0.5)		602-SA12-414	4
37	00D 958 7038 800	SCREW(CTF,3*7)		602-AKS4-496A	10
38	00D 958 7062 805	SCREW(WBTP,3*L5)		602-900-564	8

PACKING VIEW



PARTS LIST OF PACKING & ACCESSORIES

* 本表に "nsp" と記載されている部品は供給できません。

* Parts for which "nsp" is indicated on this table cannot be supplied.

* 本表に記載されている部品は、補修用部品のため製品に使用している部品とは一部、形状、寸法などが異なる場合があります。

* The parts listed below are for maintenance only, might differ from the parts used in the unit in appearances or dimensions.

Note: The symbols in the column "Remarks" indicate the following destinations.

E3: U.S.A. & Canada model

E2: Europe model

E2A : Asia model

E2C: China model

Ref. No.	Part No.	Part Name	Remarks		Q'ty	New
	1	00D 941 0059 901	POLYFOAM L		506-050-484L	1 *
	2	00D 941 0060 007	POLYFOAM R		506-050-484R	1 *
	3	nsp	SOFT SHEET(415*590*0.4t)		509-4-171A	1 *
△	4	00D 958 7043 507	TRANSFORMER(AC230V,50Hz)	for E2/E2A	411-300-369	1 △
△	4	00D 941 0057 903	TRANSFORMER(AC220V,50Hz)	for E2C	411-X050-628	1 *
△	4	00D 958 7043 400	TRANSFORMER(AC120V,60Hz)	for E3	411-300-368	1 * △
	5	nsp	I/B ASS'Y		701-X050E2A-3996	1 *
	6	00D 941 0060 104	GIFT BOX(603*205*173mm)	for E2A/E2C	507-050E2A-2853	1 *
	6	00D 941 0060 405	GIFT BOX(603*205*173mm)	for E2/E3	507-050E2-2853	1 * △
	7	nsp	BAR CODE(46*26mm,t=0.1mm)	for E2A	501-050E2A-1682	1 *
	7	nsp	BAR CODE(46*26mm,t=0.1mm)	for E2C	501-050E2C-1682	1 *
	7	nsp	BAR CODE(46*26mm,t=0.1mm)	for E2	501-050E2-1682	1 * △
	7	nsp	BAR CODE(46*26mm,t=0.1mm)	for E3	501-050E3-1682	1 * △
	8	nsp	BAR CODE(95*42.5mm,t=0.1mm)	for E2A	701-050E2A-3513	1 *
	8	nsp	BAR CODE(95*42.5mm,t=0.1mm)	for E2C	701-050E2C-3513	1 *
	8	nsp	BAR CODE(95*42.5mm,t=0.1mm)	for E2	701-050E2-3513	1 * △
	8	nsp	BAR CODE(95*42.5mm,t=0.1mm)	for E3	701-050E3-3513	1 * △
	9	nsp	TYPE PASTEBOARD		507-050-2876	1 *
	10	00M 49A Z851 350	Instruction Manual	for E2A/E2C	502-X050E2A-2241	1 * △
	10	00M 49A Z851 010	Instruction Manual	for E2/E3	502-X050E2-2401	1 * △
★	11	00D 941 0060 308	Eng. Warranty Card	for E3	502-100E3-1772	1 * △