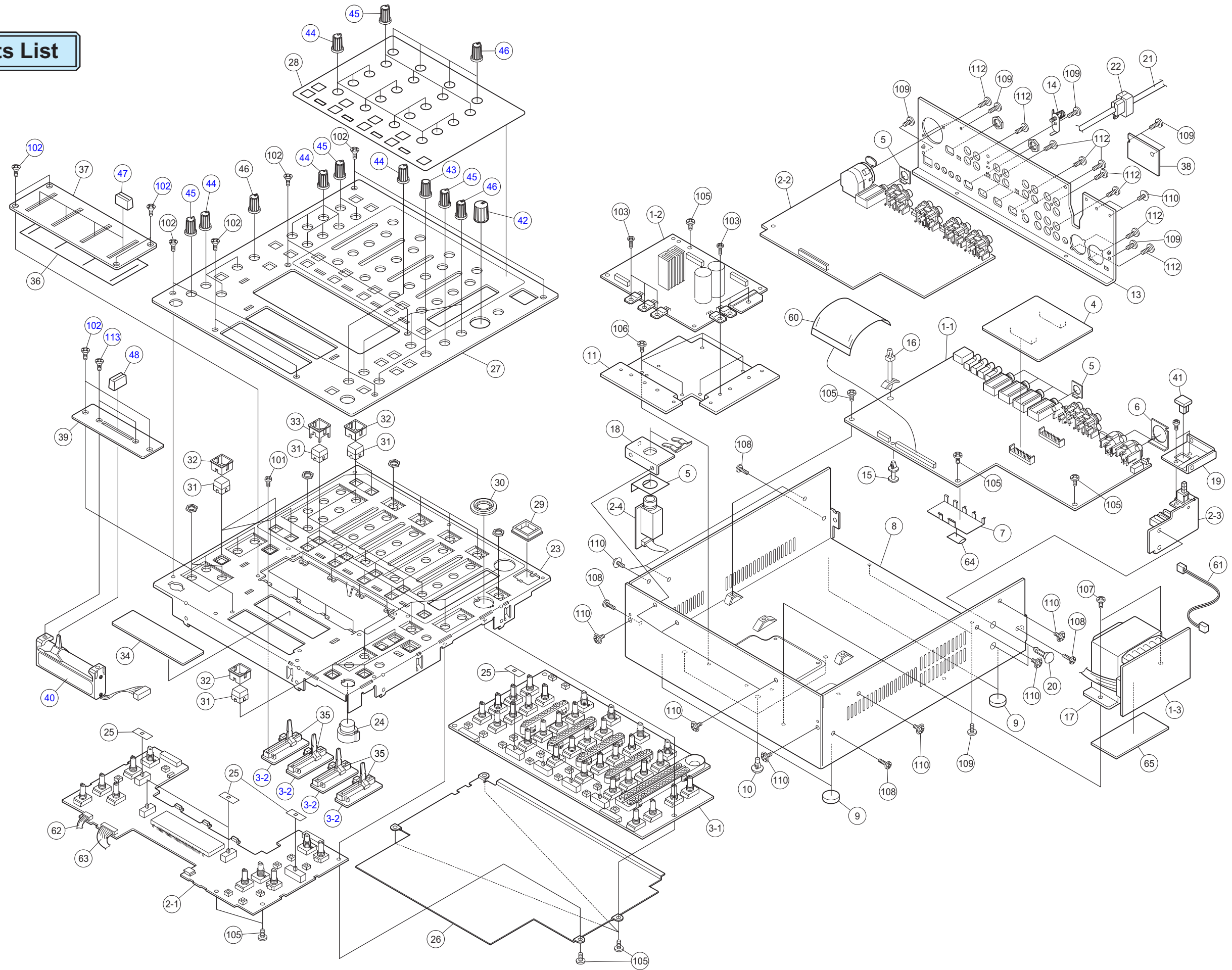


Parts List



PARTS LIST OF EXPLODED VIEW

Note: The symbols in the column "Remarks" indicate the following destinations.

E3 : U.S.A., & Canada model

E2 : Europe model

Ref. No.	Part No.	Part Name	Remarks	Q'ty	New	
1	GU-3591	MAIN&POW. P.W.B. UNIT ASS'Y	for E3	1		
1	GU-3591-A	MAIN&POW. P.W.B. UNIT ASS'Y	for E2	1		
1-1	GU-3591-1	MAIN UNIT				
1-2	GU-3591-2	POWER UNIT				
1-3	GU-3591-3	TRANS UNIT	for E3			
1-3	GU-3591-3A	TRANS UNIT	for E2			
2	GU-3592	P.UCOM&IN P.W.B. UNIT ASS'Y		1		
2-1	GU-3592-1	P.UCOM UNIT				
2-2	GU-3592-2	INPUT UNIT				
2-3	GU-3592-3	P.SW UNIT				
2-4	GU-3592-4	H/P UNIT				
3	GU-3593	P.VR P.W.B. UNIT ASS'Y		1		
3-1	GU-3593-1	P.VR UNIT				
3-2	GU-3593-2	CH FADER UNIT 1				
3-2	GU-3593-3	CH FADER UNIT 2				
3-2	GU-3593-4	CH FADER UNIT 3				
3-2	GU-3593-5	CH FADER UNIT 4				
4	GU-3594	DSP P.W.B. UNIT ASS'Y		1		
5	412 4859 007	EARTH PLATE		6		
6	441 1980 003	EARTH PLATE		2		
7	441 1987 006	EARTH BRACKET		1	*	
8	105 1447 006	BOTTOM COVER		1	*	
9	461 0706 127	FOOT SHEET		4		
10	449 0077 050	CARD SPACER (H=10)		3		
11	412 5075 000	RADIATOR		1	*	
★	GEN6583	F.CAUTION LABEL	for E3	1		
13	105 1448 005	BACK PANEL	for E3	1	*	
13	105 1448 018	BACK PANEL	for E2	1	*	
14	205 1116 006	TERMINAL ASS		1		
15	412 2814 002	CARD SPACER (L=8)		1		
⚠	16	449 0033 023	LOCKING CARD SPACER	1		
	17	233 6465 003	POWER TRANS	1	*	
	18	412 5071 101	H/P BRACKET	1	*	
	19	412 5070 005	P.SW.BRACKET	1	*	
	20	449 0202 032	LOCKING CARD SPACER	2		
⚠	21	206 2155 001	AC CORD W/CON.E3	for E3	1	
⚠	21	206 2089 106	AC CORD W/CON.E2	for E2	1	
	22	445 0084 009	CORD BUSH	for E3	1	
	22	445 0056 008	CORD BUSH	for E2	1	
	23	441 1986 007	SUB PANEL		1	*
	24	119 0125 001	TAP BUTTON		1	*
	25	122 0244 001	BLIND SHEET (SW)		8	*
	26	412 5095 006	SHIELD PLATE		1	*
	27	144 2868 003	TOP PANEL		1	*
	28	146 2341 005	SHEET		1	*
	29	146 2340 006	POWER KNOB GUIDE		1	*
	30	146 2342 004	KNOB RING		1	*
	31	113 1988 100	BUTTON		20	*
	32	113 1989 002	BUTTON BASE		11	*
	33	113 1990 004	BUTTON BASE (2)		9	*
	34	146 2339 004	WINDOW		1	*
	35	112 0925 006	SENSOR LEVER		4	*
	36	112 0928 100	BLIND SHEET		1	*
	37	144 2870 004	CH FADER PANEL		1	*
	38	105 1449 004	PLATE		1	*
	39	144 2869 002	CROSSFADER PANEL		1	*
	40	211 5652 008	CROSSFADER(P&G)		1	*
	41	113 1987 004	POWER KNOB		1	*

	Ref. No.	Part No.	Part Name	Remarks	Q'ty	New
	42	112 0927 004	MASTER KNOB		1	*
	43	112 0926 005	MODE KNOB		2	*
	44	112 0888 004	KNOB (MARU)		23	
	45	112 0888 017	KNOB (MARU)		8	
	46	112 0889 003	ASSIGN KNOB (MARU)		8	
	47	113 1920 003	CH FADER KNOB		4	
	48	113 1986 005	CROSSFADER KNOB		1	*
	★	513 1581 008	SERIAL NO. SHEET	for E3	1	
	★	513 1642 002	NO. SHEET	for E2	1	
	★	513 2303 007	VERSION LABEL		1	
	★	513 3384 009	C-UL MARK US (813)	for E3	1	
	★	513 2521 009	CE LABEL	for E2	1	
	★	513 3159 001	FCC/CLASS B CAUTION	for E3	1	
	★	513 3253 004	C-TICK LABEL	for E2	1	
	60	009 0247 006	35P FFC		1	
	61	203 5331 001	3P VH-VH CON.CORD		1	
	62	009 0247 019	8P FFC (1.25)		1	
	63	204 6350 055	11P KR-KR RIBBON 150		1	
	64	461 1133 001	EMI GASKET		1	
	65	461 1184 007	GAP PAD		1	
SCREWS						
	101	471 1810 019	2X3 CPS		8	
	102	471 2303 020	3X6 CFS-B		14	
	103	471 3204 018	2.6X8 CBS-Z		6	
	104	471 3303 016	3X6 CBS-Z		2	
	105	473 7002 018	3X8 CBTS (S)-Z		10	
	106	473 7002 034	3X6 CBTS (S)-B		5	
	107	473 7004 016	4X6 CBTS (S)-Z		2	
	108	473 7007 013	4X10 CBTS (S)-B		4	
	109	473 7015 005	3X6 CBTS(S)-B		8	
	110	473 8007 083	3X8 CUP SCREW		12	
	111	475 1184 006	12 W		5	
	112	477 0064 107	FIXING SCREW		13	
	113	471 2801 030	3X5 CFS-B		2	