



Sheeran

Busker

User Guide

(1.0) INTRODUCTION 3

- (1.1) Box Contents 3
- (1.2) Support 3
- (1.3) Rechargeable Batteries..... 3

(2.0) SETUP 4

- (2.1) Important Safety Precautions 4
 - (2.1.1) Sound Level 4
- (2.2) Getting Started 5
- (2.3) Connection Diagram 5

(3.0) FEATURES 6

- (3.1) Rear Panel 6

(4.0) OPERATION 8

- (4.1) Pairing a Bluetooth® Device 8
- (4.2) Stereo-Link™: Connecting Two Speakers 8
- (4.3) Effects 9
- (4.4) Using the Aux Input 10
- (4.5) Speaker Use Controls 10
- (4.6) App Control 11
- (4.7) Factory Reset 11

(5.0) TROUBLESHOOTING 12

(6.0) APPENDIX 13

- (6.1) Technical Specifications 13
- (6.2) Trademarks & Licenses 13

Thank you for purchasing the Sheeran Busker. This guide is designed for you to get the most out of the Sheeran Busker. We recommend you read through this guide before using the speaker.

Note: Before you first use the product, please fully charge the battery. Your unit was purposely shipped with a reduced battery charge to ensure safe transit.

Use the included power cable to connect the unit to a power outlet and let it charge for up to 12 hours. This helps ensure the longest life for your battery.

(1.1) Box Contents

- Sheeran Busker
- App Download Card
- Power Cable (5 ft. / 150 cm)
- Quickstart Guide
- Safety & Warranty Manual

(1.2) Support

For the latest information about this product (system requirements, compatibility information, etc.) and product registration, visit sheeranloopers.com.

For additional product support, visit sheeranloopers.com/support.html.

(1.3) Rechargeable Batteries

Here are some other recommendations for getting the longest life from the internal battery.

- General Usage**
 - Fully charge the battery before using it.
 - Avoid full discharge of the battery if possible. Li-Ion batteries are maintenance-free, and the battery will last longest when operating between 30 and 80 percent charged.
 - Charge the battery using the included power adapter with the power off in a cool environment indoors. The battery will not charge if its temperature is below 32°F/0°C.
 - If the product has been used continuously, charging will not begin until the buildup of heat on the battery has cooled down.
 - Charge the battery completely after each use.
- Storage**
 - For best product longevity, do not store at exceedingly hot (greater than 90°F/32°C) or exceedingly cold (less than 32°F/0°C) temperatures.
 - It is acceptable to leave your sound system plugged in. This will not overcharge the battery.
 - If you leave the battery level low and do not charge it for 3 months, it may permanently lose capacity.
- Repair**
 - If the battery fails to charge, check your fuse near the power cable input. If your fuse is intact and it still will not charge, contact Sheeran Loopers at sheeranloopers.com/support.html.
- Disposal**
 - Bring the unit to a recycling center or dispose of in accordance with local ordinances.

(2.1) Important Safety Precautions

Please note: Sheeran is not responsible for the use of its products or the misuse of this information for any purpose. Sheeran is not responsible for the misuse of its products caused by avoiding compliance with inspection and maintenance procedures. Please also refer to the included safety and warranty manual for more information.

(2.1.1) Sound Level

Permanent hearing loss may be caused by exposure to extremely high noise levels. The U.S. Occupational Safety and Health Administration (OSHA) has specified permissible exposures to certain noise levels. According to OSHA, exposure to high sound pressure levels (SPL) in excess of these limits may result in hearing loss. When using equipment capable of generating high SPL, use hearing protection while such equipment is under operation.

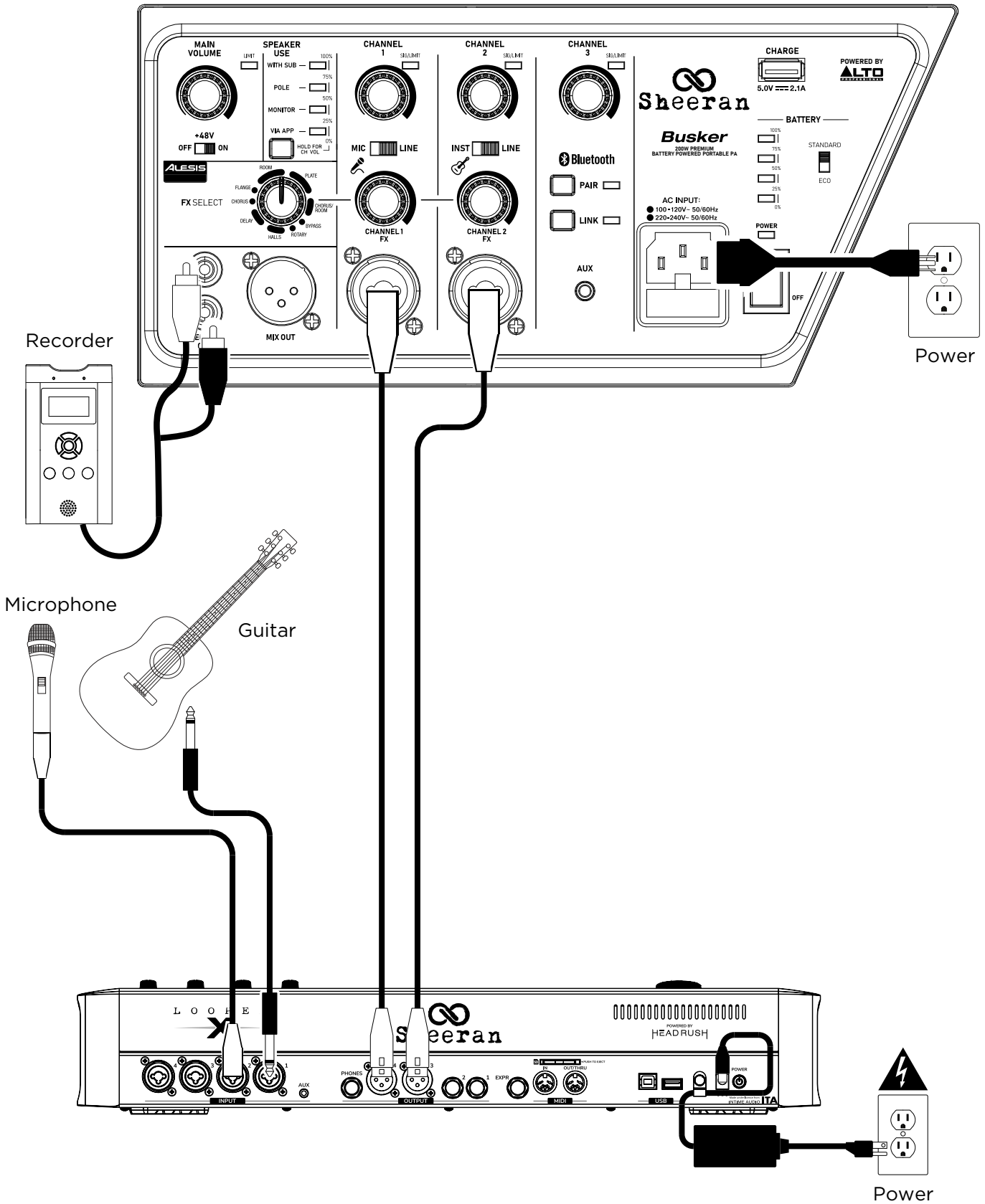
Hours per day	SPL (dB)	Example
8	90	Small gig
6	92	Train
4	95	Subway train
3	97	High-level desktop monitors
2	100	Classical music concert
1.5	102	Riveting machine
1	105	Machine factory
0.5	110	Airport
0.25 or less	115	Rock concert

(2.2) Getting Started

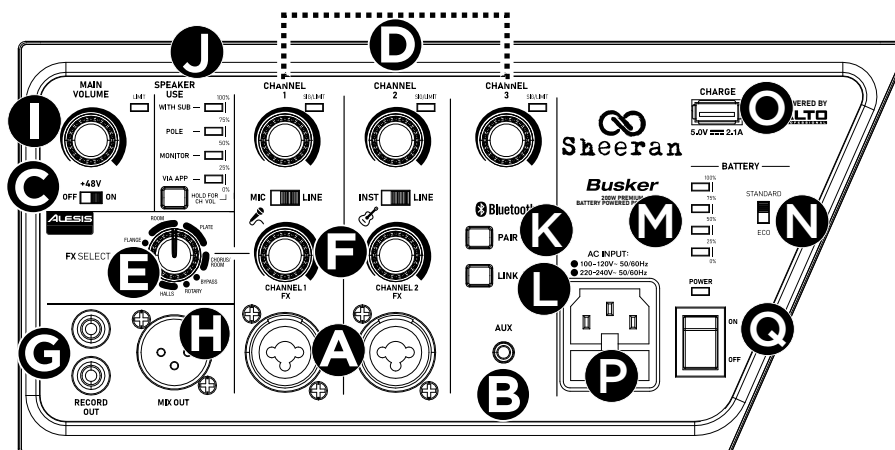
1. Make sure all items listed in the [\(1.1\) Box Contents](#) are included in the box.
2. Read the *Safety & Warranty Manual* before using the product.
3. Make sure that you have completely charged the battery prior to first use for maximum battery life.
4. Power on the Sheeran Busker.
5. Turn down the **Main Volume** on the Sheeran Busker.
6. Connect your audio input sources (i.e. microphones, instruments, CD/MP3 Players).
7. Power on audio input sources.
8. Raise the **Main Volume** to a comfortable level.
9. Raise the individual channel volumes as needed.
10. Return the **Main Volume** to zero and turn off the Sheeran Busker when you are finished.

(2.3) Connection Diagram

Items not listed under the (1.1) Box Contents are sold separately.



(3.1) Rear Panel



A. Channel Inputs 1/2 (1/4" [6.35 mm] / XLR)

Connect audio sources (mic, keyboard, guitar, etc.) here after adjusting the **MIC/LINE** and **INST/LINE** switches to the appropriate positions.

B. Channel Input 3

Use this channel to pair a Bluetooth device, link two speakers together, or connect an auxiliary device to the 1/8" (3.5 mm) **AUX** input.

C. Phantom Power

Use this switch to enable +48V phantom power for condenser microphones connected to the **CHANNEL 1** input.

D. Channel Volume

Adjust the volume controls for **CHANNELS 1-3**. The channel volume level will appear on the display when the volume is adjusted. If the **SIG/LIMIT LED** flashes, reduce the volume.

E. FX Select

Selects the effect for Sheeran Busker's internal effects processor (powered by *Effects by Alesis*) to use on **CHANNELS 1** and **2**. See [\(4.3\) Operation > Effects](#) for an explanation of the available effects.

F. Channel FX Volume

Adjusts the FX amount sent to **CHANNELS 1** and **2**.

G. Record Out (RCA)

Connect to an external recording device, mixer, etc.

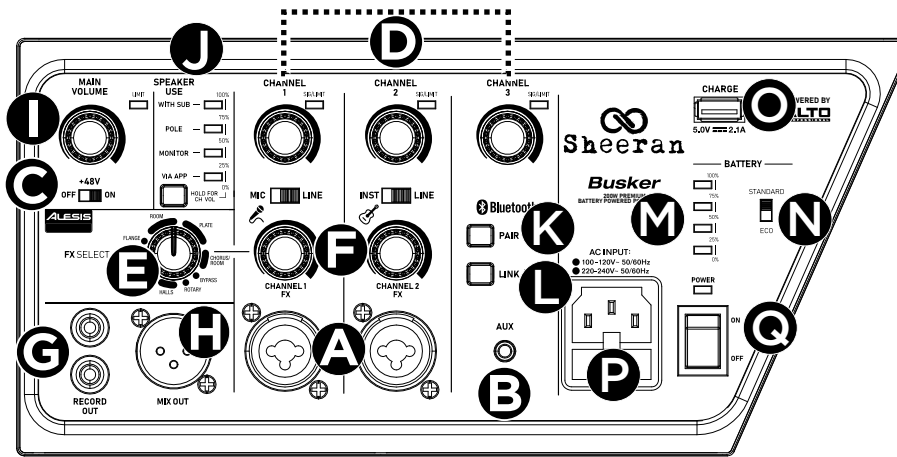
H. Mix Out (XLR)

Connect to an amplifier system or speakers.

I. Main Volume

Adjusts the overall speaker output level. If the **SIG/LIMIT LED** flashes, reduce the volume.

Note: Both the Record Out and Mix Out will send the combined Channels 1-3 and FX Level mix to connected recording devices and linked speakers. When using these connections to send signal to one or more additional Sheeran Buskers, please ensure the FX Level on the additional unit(s) is off.



J. Speaker Use

Select the DSP setting to adjust the sound based on the speaker’s placement. Select **VIA APP** to use the **ALTO Pro App** to create a custom EQ. See the section [\(4.5\) Operation > Speaker Use Controls](#) for more details.

K. Pair

Press and hold for 3 seconds to connect to a Bluetooth device. See the section [\(4.1\) Operation > Pairing a Bluetooth® Device](#) for more details.

L. Link

Press and hold for 3 seconds to Stereo-Link™ two speakers together. See the section [\(4.2\) Operation > Stereo-Link™: Connecting Two Speakers](#) for more details.

M. Battery Level/Charging Indicator

Displays the battery level or charging progress.

N. Standard/Eco Battery Switch

When running on battery power, select **ECO** for longer battery life with lower speaker output wattage. Select **STANDARD** for higher speaker output wattage but less battery time.

O. USB-A Port

Connect a smartphone, tablet, etc. here to charge it. USB charging only functions when the unit’s power is turned on.

Note: To charge smartphones and tablets faster, put the device’s screen to sleep.

P. Power

Connect the included power cable here to power the unit and charge the internal battery.

Note: The speaker will go into ERP energy saving mode when running on battery power after 30 minutes of no signal or panel interaction. This mode is cancelled when a signal is detected or with panel interaction.

Q. Power Switch

Use this switch to power the speaker on or off. Return the **Main Volume** encoder to “zero” before powering off the speaker.

(4.1) Pairing a Bluetooth® Device

Note: Press and hold the Bluetooth **Pair** button and the **Link** button for 3 seconds to disable/enable voice prompts.

1. Turn on your Bluetooth device.
2. Turn on the Sheeran Busker using the **power switch**.
3. Press and hold the **Pair** button for 3 seconds, then release it. The **Pair** LED will blink and a pairing tone will sound to show it is in pairing mode.
4. Navigate to your Bluetooth device's setup screen, find **Sheeran Busker**, and connect. The **Pair** LED will light up solid and a confirmation tone will sound when paired.

Note: If your device requires a passcode or PIN, enter **0000**.

5. Start playback from your Bluetooth device.

To disconnect a connected Bluetooth device and connect to another Bluetooth device, press and hold the **Pair** button for 10 seconds to break the connection, and then repeat Step 3.

Note: If you experience trouble connecting or playing music, update your device's OS.

Note: Sheeran Busker will automatically reconnect to the last paired device on power up if the device is in range and Bluetooth is active on the device.



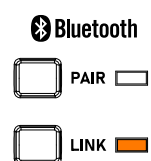
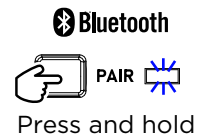
(4.2) Stereo-Link™: Connecting Two Speakers

1. Power on both Sheeran Busker speakers by using the **power switches**.
2. Follow the steps in the section [\(4.1\) Operation > Pairing a Bluetooth® Device](#).
3. Press and hold the **Link** button for 3 seconds on primary (Left) speaker, then release it. Then press the **Link** button for 3 seconds on the secondary (Right) speaker, and release it. Both Link LEDs will blink, and a linking tone will sound while each speaker searches for the other.
4. When the speakers are successfully linked, each speaker will produce a confirmation tone and the Link LEDs on both units will be lit solid.

Note: The default linking process enables stereo playback by providing half of the stereo audio signal to each speaker.

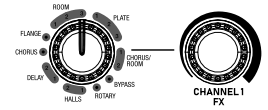
To erase Stereo-Link™ settings on both units, press and hold the **Link** button on the primary (Left) speaker for 10 seconds. A confirmation tone will sound to indicate that link settings have been erased.

Note: Two previously linked Sheeran Busker speakers will automatically reconnect when they are powered on and within range until you manually disconnect from the speakers or through the **ALTO Pro** App.



(4.3) Effects

To hear the effects on a channel: Select an effect using the **FX Select knob**. Use the **Channel 1 or 2 FX Volume knobs** to adjust the amount of the effect sent to the channel. Below is a list of the effects to choose from.



Reverb Effects

- **HALL 1:** A large, bright concert hall reverberation effect suitable for vocals and instruments.
- **HALL 2:** A large, warm concert hall reverberation effect suitable for drums, piano, and other instruments.
- **ROOM 1:** A medium-sized, moderately bright reflective room reverberation effect suitable for vocals, lead guitars, and other instruments.
- **ROOM 2:** A small, very reflective bright room reverberation effect suitable for drums and percussion as well as electric guitars and other instruments.
- **ROOM 3:** A large, warm room reverberation effect suitable for acoustic instruments.
- **PLATE 1:** A lush, smooth vocal plate reverb with a long decay time and warm tonality.
- **PLATE 2:** An emulation of vintage plate reverb with bright, slightly tinny tonality and a medium-length decay.
- **PLATE 3:** A short, bright plate reverb effective for creating subtle spaces.

Modulation Effects

- **CHORUS:** A complex, 6-voice chorus ensemble effect with short delays often referred to as a “Chorus / Doubler”. Discrete stereo signal path. Slow and watery.
- **FLANGE:** Classic stereo flange: a slow, slightly metallic sweep with a discrete stereo signal path.
- **ROTARY:** Fast rotary speaker simulator creates the classic, lush Doppler effect of an organ’s spinning horn. Effective on guitars, vocals, keyboards, and other instruments.

Delay Effects

- **DELAY 1:** A simple slap-back echo with no feedback particularly effective on vocals and rhythm guitars.
- **DELAY 2:** Medium-length poly-rhythmic delay with crossover feedback. 3 to 4 ratio between L and R delay times (291 to 388ms) for 3/4 vs. 4/4 feel. Useful for solo instruments where a long, trailing echo effect is desired.

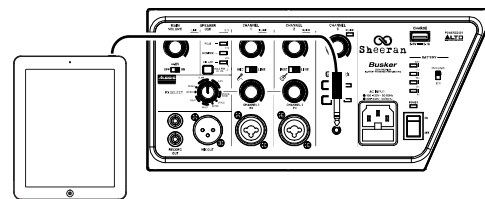
Multi Effects

- **CHORUS/ROOM 1:** Room reverb into a slow flanging modulation creates a spacey effect.
- **CHORUS/ROOM 2:** Fast modulation provides a dramatic chorus effect in a small room for a very lush chorus + reverb sound with a discrete stereo signal path.

BYPASS: Bypasses the effects processor – no effects will be heard.

(4.4) Using the Aux Input

1. Connect your smartphone, MP3 player, or similar device to the **Aux Input**.
2. Adjust the output volume on your source device.
3. Adjust the overall volume using the **Channel 3 Volume Control** on the Sheeran Busker.



(4.5) Speaker Use Controls

To cycle through the different presets listed below, press the **Speaker Use** button. This will adjust the DSP to the desired setting.

- **With Sub:** The speaker is positioned upright or horizontal on the ground (or other flat surface) facing the audience.
- **Pole:** The speaker is elevated on a speaker stand around ear level facing the audience.
- **Monitor:** The speaker is positioned horizontal on the ground facing the performer.
- **Via App:** This is the custom EQ setting selected from the **ALTO Pro App**. The default setting is flat.

SPEAKER USE

WITH SUB —

POLE —

MONITOR —

VIA APP —



Press to cycle through presets.

Press and hold for 3 seconds to enter Volume Display Mode.

To activate **Volume Display Mode**, press and hold the **Speaker Use** button for 3 seconds. Volume levels for each channel will be seen from the Speaker Use LED indicators.

A channel's SIG/LIMIT LED will flash to show the active channel:

- When the SIG/LIMIT LED is lit red, it represents the channel volume.
- When the SIG/LIMIT LED is lit green, it represents the FX level.

The volume will also be displayed when a channel's volume knob is adjusted.

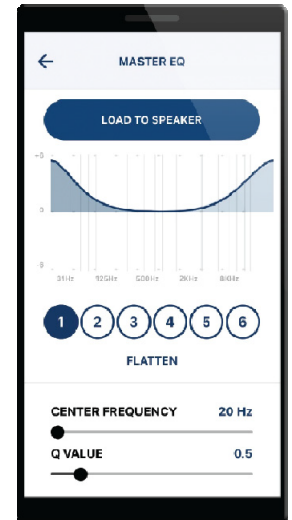
Volume Display Mode will automatically exit after 20 seconds of no use. Alternatively, press and hold the **Speaker Use** button for 3 seconds to exit.

(4.6) App Control

IMPORTANT: To ensure the best possible experience with the app, use the most current Android OS or iOS on your device.

Follow these steps to download the free app on your device:

1. Open the Apple App Store or Google Play on your device. Then, search for the **ALTO Pro** App.
2. Follow the on-screen instructions to download and install the app. Once downloaded, the **ALTO Pro** App will appear on your device's home screen.
3. Connect your device to the Sheeran Busker via Bluetooth. See the [\(4.1\) Pairing a Bluetooth® Device](#) to learn how to do this.
4. Open the **ALTO Pro** App. If prompted, allow the app to access your device's Bluetooth and Location Services.
5. Follow directions in the app to connect the Sheeran Busker and begin using the app.
6. Select the **Sheeran Busker** icon to go to the next screen, where you can use the app to control various functions of the speaker such as:
 - **Volume:** Adjust the speaker's overall volume.
 - **EQ:** Adjust the speaker's overall equalization.
 - **Channel 1, 2, & 3 Volume:** Adjust the incoming volume for the 1/4" (6.35 mm), XLR, Bluetooth, and Aux sources.
 - **Channel 1, 2, & 3 EQ:** Adjust the low, mid, and high EQ for each channel.
 - **Channel 1 & 2 FX Volume:** Adjust the FX amount sent to CHANNELS 1 and 2.
 - **Speaker Placement:** Cycle through the different DSP presets.
 - **TWS Link:** Select this to Stereo-Link™ two speakers.

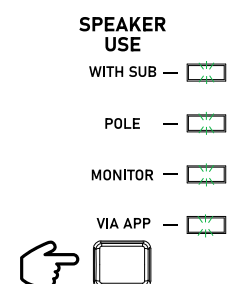
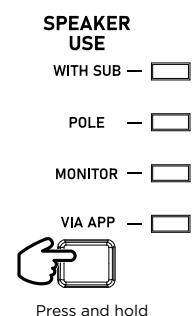


Note: You will also need to connect your second Sheeran Busker unit to the **ALTO Pro** App via the steps provided above to Stereo-Link™ both speakers.

(4.7) Factory Reset

The speaker volume, EQ, and Speaker Use settings can be reset to factory “out of the box” defaults as seen below.

1. Press and hold the **Speaker Use** button for 10 seconds. All 4 LEDs will flash on/off 4 times to indicate reset.
2. Once the LEDs start to flash, release the **Speaker Use** button.
 - Speaker Use will be set to Monitor mode.
 - Speaker Use User mode will be reset to Flat.
 - All source volumes will be set to 60%.
 - All source EQs will be set to Flat.
 - The Main EQ will be set to Flat.
 - The Alesis FX on Channels 1 & 2 will be reset to 0%.
 - The Main Volume will be set to 60%.
 - Adjust the **Acoustic Optimization** settings based on the Venue and Event for preset volume level, EQ setting, light mode, and effect setting.



After the 4 LEDs flash, release the button.

If the unit is not charging: Make sure the power cable is properly connected to the power input and the power outlet.

If the sound is distorted: Try lowering the volume control of your sound source, musical instrument, or microphone. Also, try to reduce the overall volume of the Sheeran Busker using the **Main Volume knob**.

I hear a hum when cables are connected:

- Disconnect cables from the input jacks to see if it's a faulty cable.
- Use balanced cabling connections whenever possible.
- Make sure the signal cables are not placed near power cables.
- Connect all audio equipment power cables to outlets which share a common ground.

If there is too much bass: Try adjusting the tone or EQ control on your sound source to lower the bass level. This will allow you to play the music louder before clipping (distortion) occurs.

If there is a high-pitched whistling noise when using microphones: This is probably feedback. Point the microphone away from the speaker.

If you can't hear the microphone over the music volume: Turn down the music volume from your source.

If you can't hear your instrument: Check that the **INST/LINE switch** is set to **INST**.

If you can't play music from a flash drive: The USB port is only for charging USB devices.

If you cannot connect your audio device to the Sheeran Busker via Bluetooth:

- Have your audio device (e.g., smartphone or tablet) and the Sheeran Busker as close together as possible while trying to connect. Make sure both the audio device and the Sheeran Busker are unobstructed by walls, furniture, etc.
- Press and hold the **Pair** button to reset the Bluetooth connection on the Sheeran Busker, disconnect the Sheeran Busker from any other audio device, and restart the search process. If this does not work right away, power off the Sheeran Busker and then power it back on.
- Reset the Bluetooth connection on your audio device by turning Bluetooth off and back on. You can find this under the Bluetooth menu in the Settings for your phone or other audio device.

If this does not work, and you have connected to the Sheeran Busker before, find the Sheeran Busker in the list of available or previously connected devices in your audio device's Bluetooth menu, tap the "gear" or "i" icon located next to it and then select **Unpair** or **Forget**. Turn the Sheeran Busker off and back on and try pairing again once it reappears in your available devices list.

Note: If the Sheeran Busker has been paired to another audio device recently that is still within range, you may need to repeat this process with that audio device to fully disconnect.

If you are having issues connecting two speakers using Stereo-Link™:

- Press and hold the **Link** button on the primary (Left) speaker for 10 seconds to reset the Stereo-Link™ settings on both units. A confirmation tone will sound to indicate that link settings have been erased.
- Press and hold the **Pair** button to reset the Bluetooth connection on the Sheeran Busker, disconnect Sheeran Busker from any other audio device, and restart the search process. If this does not work right away, power off Sheeran Busker and then power it back on.

(6.1) Technical Specifications

Output Power	Standard Mode: 200 W (peak) Eco Mode: 50 W (peak)
Drivers	Low-Frequency: 6.5" (165.1 mm) woofer High-Frequency: 1.0" (25.4 mm) tweeter
Max SPL	106 dB
Frequency Response	60 Hz – 20 kHz
Connectors	(2) Combo XLR-1/4" (6.35 mm) Inputs (1) 1/8" (3.5 mm) AUX Input (1) USB Charging Port (1) XLR Line Out (1) RCA Line Out
Charge Port	5V, 2.1 A
Speaker Pole Cup Size	35 mm
Bluetooth Specifications	Profile: A2DP, AVRCP Version: 5.3 Frequency: 2402 – 2480 MHz Maximum Transmission Power: 10 dBm Protocol: BLE Codec: SBC Range: 100 ft. (30.5 m)
Battery	Type: 6.6 Ah, 12 V, Lithium Ion Life: <i>Eco Mode:</i> up to 24 hours; <i>Standard Mode:</i> up to 20 hours Charging Time: 12 hours
Power	Connection: IEC Voltage: 100–240 VAC, 50/60 Hz, 120 W; 220–240 VAC, 50/60 Hz; 120 W Fuse: 100–120 V, T1.6AL AC250 V; 220–240 V, T0.8AL AC250 V
Dimensions (height x width x depth)	11.8" x 8.6" x 10.0" 299 x 219 x 254 mm
Weight	11.9 lbs. 5.4 kg

Specifications are subject to change without notice.

Bluetooth and wireless reception and range are affected by walls, obstructions, and movement. For optimal performance, place the product in the center of the room so it is unobstructed by walls, furniture, etc. Battery life may vary based on temperature, age, and volume usage of product.

(6.2) Trademarks & Licenses

Sheeran Loopers products are produced by inMusic Brands, Inc.

Alto Professional is a trademark of inMusic Brands, Inc., registered in the U.S. and other countries.

The *Bluetooth* word mark and logos are owned by the Bluetooth SIG, Inc. and any use of such marks by Alto Professional is under license.

Alesis is a trademark of inMusic Brands, Inc., registered in the U.S. and other countries.

App Store is a trademark of Apple Inc., registered in the U.S. and other countries.

Google Play is a registered trademark of Google Inc.

All other product names, company names, trademarks, or trade names are those of their respective owners.

Sheeranloopers.com